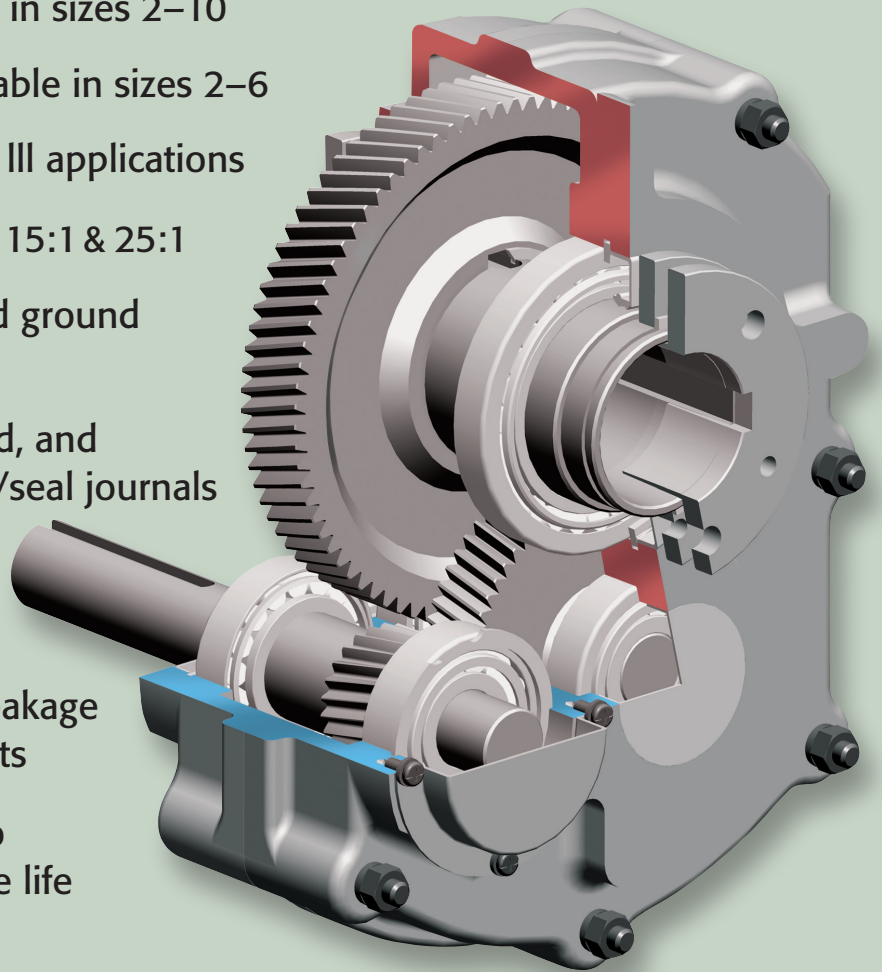


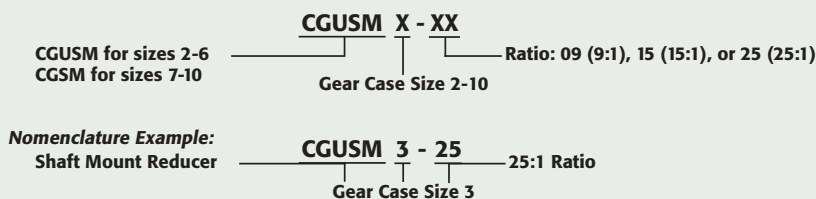
SHAFT MOUNT AND SCREW CONVEYOR REDUCER FEATURES

- Shaft Mount reducers available in sizes 2–10
- Screw Conveyor reducers available in sizes 2–6
- Suitable for AGMA Class I, II, or III applications
- Ratios Available: 9:1 (size 2–6), 15:1 & 25:1
- Carburized, case hardened, and ground helical gearing
- Alloy steel shafts with hardened, and ground gear seats and bearing/seal journals designed to maximize durability and operating life
- Double lip spring loaded shaft seals designed to prevent oil leakage in harsh operating environments
- Oversized bearings designed to ensure long and reliable service life in severe duty applications
- High strength cast iron housings are precision machined to provide maximum support for all shafts
- Warranty: 18 months from shipment or 1 year from installation, whichever comes first
- Reducers and Accessories stocked in multiple locations



Contents	Page
Features/Benefits	2
Selection Guides	3-5
Shaft Mount Reducer Dimensions	6
Accessories/Instructions	7-9
Screw Conveyor Reducer Dimensions/Install Instructions	10
Screw Conveyor Reducer Accessories	11
Belt Guard and Gearbox Parts List/Exploded View	12
Service and Repair Parts	13
Engineering/Technical Data	14-17
Install/Lubrication Instructions	18-19

NOMENCLATURE



SHAFT MOUNT AND SCREW CONVEYOR REDUCERS

Selection Guide - Class I

Selection Guide			
Class I Service @ 1750 RPM Input Speed			
Input HP	Output RPM	Size-Ratio	Size-Ratio
1/2	4-6		2-25
3/4	4-5		3-25
	6-10		2-25
1	4-5		4-25
	6-7		3-25
	8-15		2-25
1 1/2	4		5-25
	5-7		4-25
	8-12		3-25
	13-23		2-25
2	4-6		5-25
	7-10		4-25
	11-17		3-25
	18-32	2-25	2-15
3	4-5		6-25
	6-10		5-25
	11-15		4-25
	16-26		3-25
	27-51	2-25	2-15
5	5-6		7-25
	7-9		6-25
	10-17		5-25
	18-26	4-25	4-15
	27-46	3-25	3-15
	47-70	2-25	2-15
	71-85	2-15	2-25
86-92		2-15	
7 1/2	4-6		8-25
	7-9		7-25
	10-15		6-25
	16-26		5-25
	27-40	4-25	4-15
	41-74	3-25	3-15
	75-85	2-25	2-15
	86-140	2-15	2-09
	140-200		2-09
10	5		9-25
	6-8		8-25
	9-12		7-25
	13-20		6-25
	21-36	5-25	5-15
	37-56	4-25	4-15
	57-85	3-25	3-15
	86-103	3-15	3-09
	104-115	2-15	2-09
116-200		2-09	
15	5-6		10-25
	7-8		9-25
	9-13		8-25
	14-19		7-25
	20-32	6-25	6-15
	33-56	5-25	5-15
	57-85	4-25	4-15
	86-93	4-15	4-09
	94-140	3-15	3-09**
	141-200		3-09**

** Fan Cooling Required, Consult Factory

See pages 15-17 for Mechanical Ratings

Selection Guide			
Class I Service @ 1750 RPM Input Speed			
Input HP	Output RPM	Size-Ratio	Size-Ratio
20	7-8		10-25
	9-12		9-25
	13-18		8-25
	19-26	7-25	7-15
	27-45	6-25	6-15
	46-78	5-25	5-15
	79-85	4-25	4-15
	86-115	4-15	4-09**
	116-140	4-15**	4-09**
141-200		3-09**	
25	8-10		10-25
	11-15		9-25
	16-23		8-25
	24-33	7-25	7-15
	34-59	6-25	6-15
	60-80	5-25**	5-15**
	81-101	5-15**	5-09**
	102-140	4-15	4-09**
	141-200		4-09**
30	10-13		10-25
	14-19		9-25
	20-28	8-25	8-15
	29-41	7-25	7-15
	42-75	6-25	6-15
	76-125	5-15**	5-09**
	126-200		4-09**
40	13-18		10-25
	19-25	9-25	9-15
	26-38	8-25	8-15
	39-57	7-25	7-15
	58-70	6-25	6-15
	71-81	6-25**	6-15**
	82-114	6-15**	6-09**
	115-125	5-15**	5-09**
	126-200		5-09**
50	16-22		10-25
	23-32	9-25	9-15
	33-49	8-25	8-15
	50-70	7-25	7-15
	71-74	7-15	7-25
	75-125		6-15**
60	19-27	10-25	10-15
	28-39	9-25	9-15
	40-60	8-25	8-15
	61-70	7-25**	7-15**
	71-120		7-15**
75	24-34	10-25	10-15
	35-50	9-25	9-15
	51-70	8-25	8-15
	71-78		8-15**
	79-120		7-15**
100	32-46	10-25	10-15
	47-69	9-25**	9-15**
	70-120		8-15**
125	41-59	10-25	10-15
	60-70	9-15**	9-25**
	71-90		9-15**
	91-123		8-15**
150	50-70	10-25	10-15
	71-75	10-15*	10-25**
	76-80		10-15**
	81-120		9-15

SHAFT MOUNT AND SCREW CONVEYOR REDUCERS

Selection Guide - Class II

Selection Guide			
Class II Service @ 1750 RPM Input Speed			
Input HP	Output RPM	Size-Ratio	Size-Ratio
1/3	4-6		2-25
1/2	4-5		3-25
	6-9		2-25
3/4	4-5		4-25
	6-8		3-25
	9-16		2-25
1	5-7		4-25
	8-11		3-25
	12-22		2-25
1 1/2	5-6		5-25
	7-11		4-25
	12-18		3-25
	19-34	2-25	2-15
2	4-5		6-25
	6-9		5-25
	10-14		4-25
	15-24	3-25	3-15
	25-47	2-25	2-15
3	4-5		7-25
	6-8		6-25
	9-14		5-25
	15-22	4-25	4-15
	23-38	3-25	3-15
	39-70	2-25	2-15
5	71-75	2-15	2-25
	4-6		8-25
	7-8		7-25
	9-14		6-25
	15-24		5-25
	25-37	4-25	4-15
	38-69	3-25	3-15
70-85	2-25	2-15	
7 1/2	86-136	2-15	2-09
	137-140		2-09
	5		9-25
	6-9		8-25
	10-13		7-25
	14-21		6-25
	22-38	5-25	5-15
	39-59	4-25	4-15
	60-85	3-25	3-15
	86-110	3-15	3-09
10	111-122		2-15
	123-140	2-15	2-09
	141-200		2-09
	5		10-25
	6-7		9-25
	8-12		8-25
	13-18		7-25
	19-29	6-25	6-15
	30-52	5-25	5-15
	53-84	4-25	4-15
15	85-140	3-15	3-09
	141-200		3-09
	7-9		10-25
	10-12		9-25
	13-19		8-25
	20-27		7-25
	28-47	6-25	6-15
	48-82	5-25	5-15
	83-140	4-15	4-09
	141-150		4-09
151-200		3-09**	

Selection Guide				
Class II Service @ 1750 RPM Input Speed				
Input HP	Output RPM	Size-Ratio	Size-Ratio	
20	9-12		10-25	
	13-17		9-25	
	18-26		8-25	
	27-38	7-25	7-15	
	39-68	6-25	6-15	
	69-80	5-25	5-15	
	81-89		5-15	
	90-117	5-15**	5-09**	
	118-125	4-15**	4-09**	
	126-200		4-09**	
25	11-15		10-25	
	16-22		9-25	
	23-33	8-25	8-15	
	34-49	7-25	7-15	
	50-80	6-25	6-15	
	81-94	6-15	6-09	
	95-125	5-15**	5-09**	
	126-174		5-09**	
	175-200		4-09**	
	30	13-19		10-25
20-27		9-25	9-15	
28-41		8-25	8-15	
42-60		7-25	7-15	
61-76		6-25	6-15	
77-89		6-15	6-09	
90-125		6-15**	6-09**	
126-200			5-09**	
40		18-25		10-25
		26-36	9-25	9-15
	37-56	8-25	8-15	
	57-75	7-25	7-15	
	76-88		7-15	
	89-120	6-15**	6-09**	
	121-200		6-09**	
	50	22-32	10-25	10-15
		33-46	9-25	9-15
		47-70	8-25	8-15
71-72		8-15	8-25	
73-120			7-15**	
60	27-39	10-25	10-15	
	40-56	9-25	9-15	
	57-70	8-25	8-15	
	71-75	8-15	8-25	
	76-89		8-15	
75	90-120		7-15**	
	34-49	10-25	10-15	
	50-73	9-25	9-15	
	74-75	8-15	8-25	
	76-120		8-15**	
100	46-67	10-25	10-15	
	68-75	9-15**	9-25**	
	76-103		9-15**	
	104-120		8-15**	
125	59-75	10-25	10-15	
	76-85		10-15	
	86-120		9-15**	

** Fan Cooling Required, Consult Factory

SHAFT MOUNT AND SCREW CONVEYOR REDUCERS

Selection Guide - Class III

Selection Guide			
Class III Service @ 1750 RPM Input Speed			
Input HP	Output RPM	Size-Ratio	Size-Ratio
1/4	4-6		2-25
1/3	5-9		2-25
1/2	4-5		4-25
	6-7		3-25
	8-15		2-25
3/4	4		5-25
	5-7		4-25
	8-12		3-25
	13-23		2-25
1	4-6		5-25
	7-10		4-25
	11-17		3-25
	18-32		2-25
1 1/2	4-5		6-25
	6-10		5-25
	11-15		4-25
	16-26		3-25
	27-51	2-25	2-15
2	5-7		6-25
	8-13		5-25
	14-21		4-25
	22-36	3-25	3-15
	37-71	2-25	2-15
3	4-5		8-25
	6-7		7-25
	8-12		6-25
	13-20		5-25
	21-32	4-25	4-15
	33-57	3-25	3-15
	58-85	2-25	2-15
	86-113	2-15	2-09
5	5		9-25
	6-8		8-25
	9-12		7-25
	13-20		6-25
	21-36	5-25	5-15
	37-56	4-25	4-15
	57-85	3-25	3-15
	86-103	3-15	3-09
	104-140	2-15	2-09
	141-200		2-09
7 1/2	5-6		10-25
	7-8		9-25
	9-13		8-25
	14-19		7-25
	20-32	6-25	6-15
	33-56	5-25	5-15
	57-85	4-25	4-15
	86-93	4-15	4-09
	94-140	3-15	3-09
	141-200		3-09

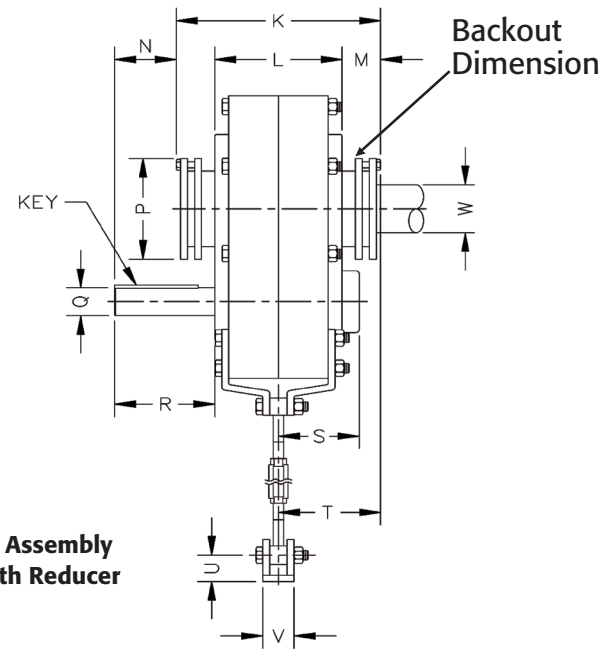
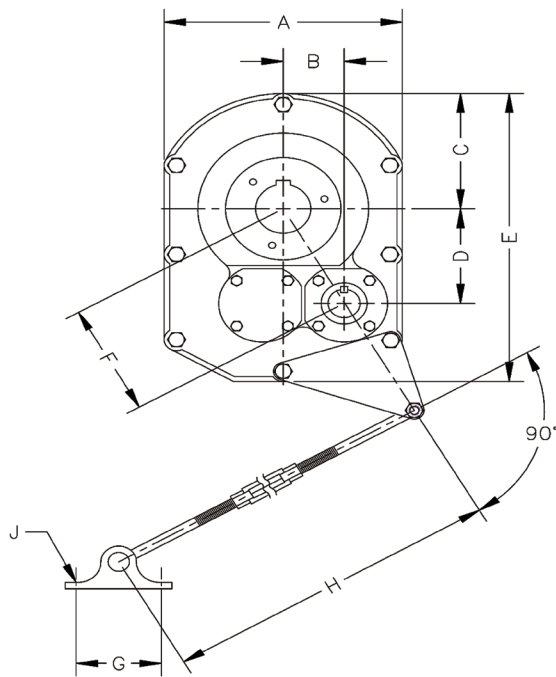
Selection Guide			
Class III Service @ 1750 RPM Input Speed			
Input HP	Output RPM	Size-Ratio	Size-Ratio
10	7-8		10-25
	9-12		9-25
	13-18		8-25
	19-26	7-25	7-15
	27-45	6-25	6-15
	46-78	5-25	5-15
	79-92		4-15
	93-141	4-15	4-09
	142-200		3-09
	15	10-13	
14-19			9-25
20-28		8-25	8-15
29-41		7-25	7-15
42-75		6-25	6-15
76-93			5-15
76-125		5-15	5-09
126-131			5-09
132-200			4-09
20		13-18	
	19-25	9-25	9-15
	26-38	8-25	8-15
	39-57	7-25	7-15
	58-70	6-25	6-15
	71-114	6-15	6-09
	115-125	5-15**	5-09**
	126-200		5-09**
25	16-22		10-25
	23-32	9-25	9-15
	33-49	8-25	8-15
	50-74	7-25	7-15
	75-104	6-15	6-09
	105-113	6-15	6-09**
	114-125	6-15**	6-09**
126-200		6-09**	
30	19-27	10-25	10-15
	28-39	9-25	9-15
	40-60	8-25	8-15
	61-70	7-25	7-15
	71-98		7-15
	99-125	6-15**	6-09**
	126-200		6-09**
40	26-37	10-25	10-15
	38-53	9-25	9-15
	54-70	8-25	8-15
	71-84		8-15
	85-89		7-15
	90-120		7-15**
50	32-46	10-25	10-15
	47-69	9-25	9-15
	70-75	8-15	8-25
	76-110		8-15
	111-120		7-15**
60	39-56	10-25	10-15
	57-75	9-25	9-15
	76-85		9-15
	86-115		8-15
75	50-72	10-25	10-15
	73-75	9-15**	9-25**
	76-120		9-15**

** Fan Cooling Required, Consult Factory

See pages 15-17 for Mechanical Ratings

SHAFT MOUNT AND SCREW CONVEYOR REDUCERS

Dimensions



Note:
Torque Arm Assembly
Included with Reducer

Size	A	B	C	D	E	F	G	H MIN/MAX	J	K	L	Backout Dimension
2	8.43	2.14	4.13	3.76	11.42	4.32	3	26.94/32.94	0.44	7.32	4.5	1.25"
3	9.25	2.33	4.84	4.17	12.88	4.78	3	26.94/32.94	0.44	9.22	5.63	1.50"
4	10.51	2.76	5.51	4.79	15.24	5.53	4	29.19/35.19	0.5	9.98	6.14	1.75"
5	13.15	3.04	6.57	5.67	18.15	6.43	4	29.19/35.19	0.5	10.52	6.46	1.81"
6	15.43	4.09	7.72	6.73	21.65	7.88	4.75	29.19/35.19	0.63	11.53	7.28	1.81"
7	18.75	5.11	9.38	8.3	25.94	9.74	4.75	29.44/35.44	0.63	12.85	7.75	2.06"
8	20.25	6.03	10.13	9.5	28.25	11.25	7	30.00/36.00	0.75	14.03	8.37	2.06"
9	22.63	6.59	11.31	10.81	31.69	12.66	7	30.00/36.00	0.75	14.12	8.42	2.44"
10	22.63	6.59	12.75	12.5	35	14.13	7.09	30.00/36.00	0.75	15.63	9.49	2.50"

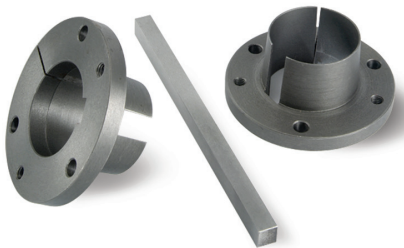
Size	M	N	P	Q	R	S	T	KEY	U	V	W MAX.	Reducer Weight
2	0.65	3.01	4.09	1 1/8	3.59	2.91	3.66	1/4 SQ X 2.5	1.06	1.25	1 15/16	60
3	0.81	3.22	4.39	1 1/4	4.34	3.25	3.75	1/4 SQ X 2.88	1.06	1.25	2 3/16	100
4	0.85	4.31	4.8	1 7/16	5.57	3.37	3.92	3/8 SQ X 4.06	1.75	1.44	2 7/16	140
5	0.93	4.34	5.63	1 15/16	5.75	4.14	4.41	1/2 SQ X 4.50	1.75	1.4	2 15/16	210
6	0.98	4.69	6.1	2 3/16	6.08	4.57	5.28	1/2 SQ X 4.50	2	2.75	3 7/16	285
7	2.5	3.75	7.25	2 7/16	6.35	4.69	6.38	5/8 SQ X 4.75	2	2.75	3 15/16	465
8	2.88	4.31	7.25	2 7/16	7.11	5.58	7.04	5/8 SQ X 5.38	3.13	4	4 7/16	635
9	2.98	6.63	8.75	2 7/16	9.65	5.66	7.04	5/8 SQ X 7.75	3.13	4	4 15/16	760
10	3.07	6.53	10	2 11/16	9.65	6.91	7.04	5/8 SQ X 7.88	3.13	4	5 7/16	885

SHAFT MOUNT REDUCER

Accessories

Tapered Bushing Kits

Cleveland Gear twin tapered bushing kits are perfectly sized for CGUSM reducers (as well as other manufacturers' shaft mount drives). They assure you of fast and simple installation as well as reliable support on both sides of the reducer. All CGC tapered bushing kits come complete with fastening bolts and a full-length key.

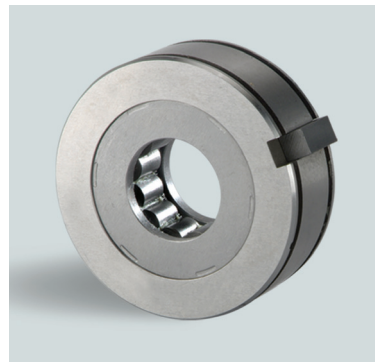


Reducer Size	Bore Size	Part #	Weight (lbs)	
2	1-1/4	2CGB-1 1/4	4	
	1-5/16	2CGB-1 5/16	4	
	1-3/8	2CGB-1 3/8	4	
	1-7/16	2CGB-1 7/16	4	
	1-1/2	2CGB-1 1/2	4	
	1-5/8	2CGB-1 5/8	4	
	1-11/16	2CGB-1 11/16	4	
	1-3/4	2CGB-1 3/4	4	
3	1-15/16	2CGB-1 15/16	4	
	1-11/16	3CGB-1 11/16	4	
	1-3/4	3CGB-1 3/4	4	
	1-7/8	3CGB-1 7/8	4	
	1-15/16	3CGB-1 15/16	4	
	2	3CGB-2	4	
	2-3/16	3CGB-2 3/16	4	
	4	1-15/16	4CGB-1 15/16	6
2		4CGB-2	6	
2-1/8		4CGB-2 1/8	6	
2-3/16		4CGB-2 3/16	6	
2-1/4		4CGB-2 1/4	6	
2-7/16		4CGB-2 7/16	6	
5		2-3/16	5CGB-2 3/16	10
		2-1/4	5CGB-2 1/4	10
	2-7/16	5CGB-2 7/16	10	
	2-1/2	5CGB-2 1/2	10	
	2-11/16	5CGB-2 11/16	10	
	2-15/16	5CGB-2 15/16	10	

Reducer Size	Bore Size	Part #	Weight (lbs)
6	2-7/16	6CGB-2 7/16	10
	2-1/2	6CGB-2 1/2	10
	2-11/16	6CGB-2 11/16	10
	2-7/8	6CGB-2 7/8	10
	2-15/16	6CGB-2 15/16	10
	3	6CGB-3	10
7	3-7/16	6CGB-3 7/16	10
	2-1/2	7CGB-2 1/2	18
	2-11/16	7CGB-2 11/16	18
	2-15/16	7CGB-2 15/16	18
	3	7CGB-3	18
	3-3/16	7CGB-3 3/16	18
8	3-7/16	7CGB-3 7/16	18
	3-15/16	7CGB-3 15/16	18
	2-15/16	8CGB-2 15/16	20
	3-7/16	8CGB-3 7/16	20
	3-15/16	8CGB-3 15/16	20
	4-3/16	8CGB-4 3/16	20
9	4-7/16	8CGB-4 7/16	20
	3-7/16	9CGB-3 7/16	40
	3-15/16	9CGB-3 15/16	40
	4-7/16	9CGB-4 7/16	40
10	4-15/16	9CGB-4 15/16	40
	3-15/16	10CGB-3 15/16	40
	4-7/16	10CGB-4 7/16	40
	4-15/16	10CGB-4 15/16	40
	5-7/16	10CGB-5 7/16	40

Backstop Assemblies

Cleveland's backstop assemblies easily mount internally on the enclosed end of the high speed shaft. They allow smooth one directional operation preventing reverse rotation and slippage. They are dimensionally interchangeable with most other manufacturers' assemblies.



Reducer Size	Part Number	Weight (lbs)
2	2CGBS	1
3	3CGBS	1
4	4CGBS	1
5	5CGBS	1
6	6CGBS	2
7	7CGBS	2
8	8CGBS	2
9	9CGBS	3
10	10CGBS	3

Backstop Installation Instructions:

Step 1: Remove backstop cover and gasket from reducer body.

Step 2: Remove snap ring from shaft and housing bore.

Step 3: Determine the direction of required shaft rotation.

Note: The arrow direction on the backstop shows the free direction of the race. See diagram included.

Step 4: Insert the backstop into the housing, insert the key into backstop's outer race and housing keyway. In the event of a backstop with an inner race, feed second key into the inner race of the backstop and shaft keyway.

Note: If the shaft rotation requires the opposite direction of the arrow, turn the backstop around so the arrow side is facing the reducer.

**** Caution:** DO NOT use a hammer to press the backstop into housing. Backstop may be tapped gently if necessary.

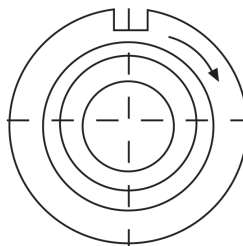
Step 5: Re-install the snap rings as required.

Step 6: Re-install backstop cover and replace the gasket where fitted, use sealant for oil seal.

Step 7: Re-fill reducer with correct oil.

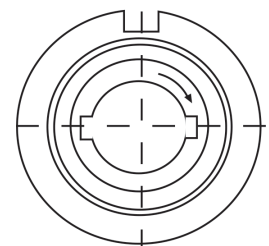
**** If reducer is filled with oil, drain before proceeding**

For Sizes 2, 3, 4, 5



When backstop does not have an inner race, rotation arrow is marked on the outer race, and this is the outer race's free direction.

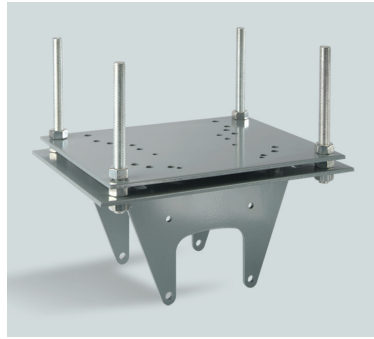
For Sizes 6, 7, 8, 9, 10



When backstop does have an inner race, rotation arrow is marked on the inner race, and this is the inner race's free direction.

STANDARD MOTOR MOUNTS

Manufactured from heavy gauge steel, Cleveland Gear motor mounts provide a solid platform for most NEMA frame motors. The adjustable top plate is used to produce the proper belt tensioning.



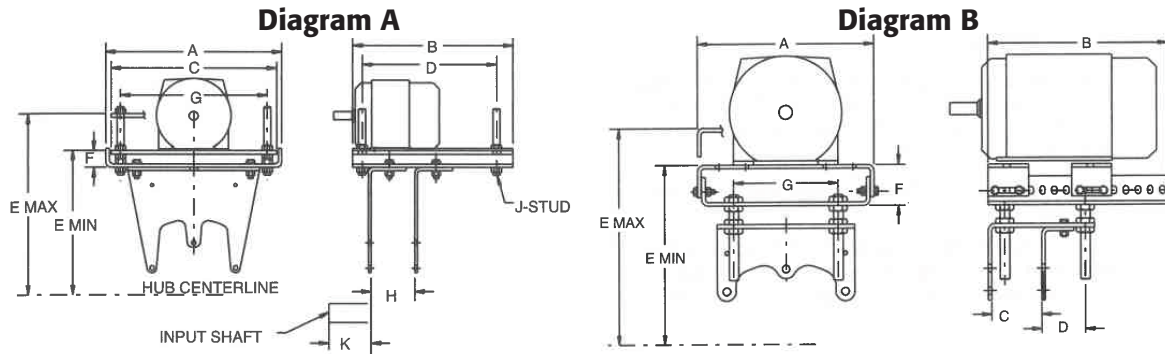
Reducer Size	Part Number	Weight (lbs)
2	2CGMM	30
3	3CGMM	30
4	4CGMM	40
5	5CGMM	50
6	6CGMM	60
7	7CGMM	80
8	8CGMM	100
9	9CGMM	115
10	10CGMM	135

CGMM Standard Motor Mounts 2CGMM -7CGMM - see Diagram A

Part Number	NEMA Motor Frame	A	B	C	D	E Min	E Max	G	H	J	K
2CGMM	56T-215T	14.63	11.00	13.50	9.25	10.59	14.75	12.00	3.38	5/8 X 7	4.18
3CGMM	56T-215T	14.63	11.00	13.50	9.25	11.59	15.78	12.00	4.25	5/8 X 7	4.88
4CGMM	143T-286T	18.63	17.00	17.50	14.25	11.96	16.73	15.50	4.63	3/4 X 8	6.13
5CGMM	143T-286T	18.63	17.00	17.50	14.25	12.53	17.28	15.50	4.13	3/4 X 8	6.65
6CGMM	143T-326T	20.50	18.50	19.25	16.50	14.56	19.31	17.50	4.50	3/4 X 8	7.31
7CGMM	143T-365T	22.50	19.00	21.25	16.50	17.62	22.13	19.25	4.75	1 X 9	7.81

8CGMM -10CGMM - see Diagram B

Part Number	NEMA Motor Frame	A	B	C	D	E Min	E Max	F	G
8CGMM	213T-365T	18.63	19.00	5.25	4.36	19.40	23.90	4.25	11.00
9CGMM	213T-365T	18.63	19.00	5.25	4.63	21.46	25.90	4.25	11.00
10CGMM	254T-365T	18.63	19.00	6.00	3.88	22.60	27.09	4.25	11.00



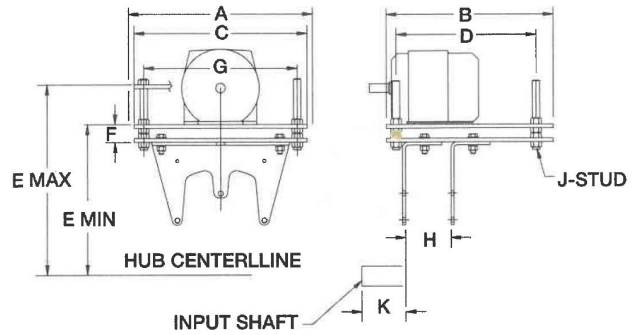
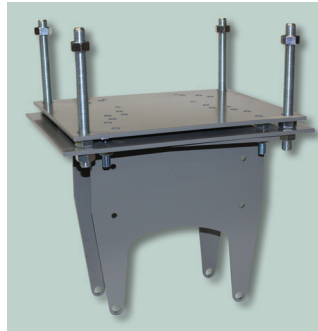
V-Belt Drive Center Distances

Part Number	Center Distance for Various NEMA Motor Frames																			
	56		140		180		210		250		280		320		360		400		440	
	Min	Max	Min	Max	Min	Max	Min	Max	Min	Max	Min	Max	Min	Max	Min	Max	Min	Max	Min	Max
2CGMM	18.7	22.1	18.7	22.1	19.7	23.1	20.5	23.9	-	-	-	-	-	-	-	-	-	-	-	-
3CGMM	20.2	23.6	20.2	23.6	21.2	24.6	22.0	25.3	23.0	26.3	-	-	-	-	-	-	-	-	-	-
4CGMM	-	-	21.2	25.2	22.2	26.2	23.0	26.9	23.9	27.9	24.7	28.7	-	-	-	-	-	-	-	-
5CGMM	-	-	22.7	26.6	23.7	27.6	24.4	28.4	25.4	29.4	26.2	30.1	27.2	31.1	-	-	-	-	-	-
6CGMM	-	-	25.9	29.7	26.9	30.7	27.6	31.4	28.6	32.4	29.4	33.2	30.4	34.2	-	-	-	-	-	-
7CGMM	-	-	30.6	34.4	31.6	35.4	32.4	36.2	33.4	37.2	34.1	37.9	35.1	38.9	36.1	40.0	-	-	-	-
8CGMM	-	-	-	-	-	-	35.5	40.5	36.4	41.2	37.2	42.2	38.2	43.2	39.2	44.2	-	-	-	-
9CGMM	-	-	-	-	-	-	38.0	43.0	39.0	44.0	39.8	44.7	40.7	45.7	41.7	46.7	42.8	47.7	-	-
10CGMM	-	-	-	-	-	-	-	-	42.6	47.5	43.3	48.2	44.3	49.2	45.3	50.2	45.8	50.7	47.3	51.7

LONG MOTOR MOUNTS

Like its standard counterpart, the Cleveland Long Motor Mount supports most NEMA frame motors while providing a solid platform. The Long Motor Mount has longer support brackets giving more clearance between the conveyor pulley and the bottom plate.

Reducer Size	Part Number	Weight (lbs.)
3	3CGMML	50
4	4CGMML	60
5	5CGMML	75
6	6CGMML	80



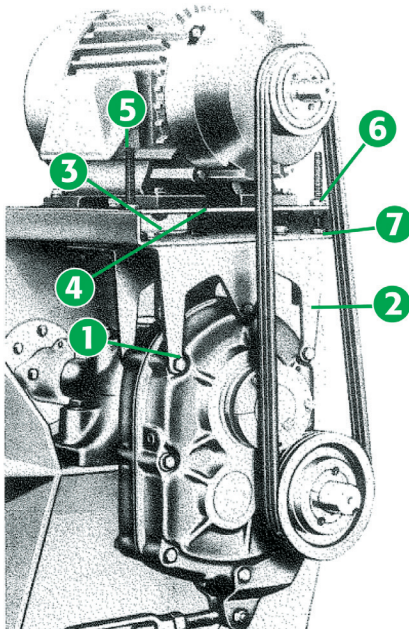
CGMM Long Motor Mounts

Part Number	NEMA Motor Frame	A	B	C	D	E Min	E Max	F	G	H	J	K
3CGMML	56T-215T	14.63	11.00	13.50	9.25	14.59	18.72	1.59	12.00	4.25	5/8 X 7	4.88
4CGMML	143T-286T	18.63	17.00	17.50	14.25	16.46	21.20	1.78	15.50	4.63	3/4 X 8	6.13
5CGMML	143T-286T	18.63	17.00	17.50	14.25	19.28	24.03	1.84	15.50	4.13	3/4 X 8	6.65
6CGMML	143T-326T	20.50	18.50	19.25	16.50	28.56	33.30	1.84	17.50	4.50	3/4 X 8	7.31

V-Belt Drive Center Distances

Part Number	Center Distance for Various NEMA Motor Frames													
	56		140		180		210		250		280		320	
	Min	Max	Min	Max	Min	Max	Min	Max	Min	Max	Min	Max	Min	Max
3CGMML	23.1	26.5	23.1	26.5	24.1	27.5	24.9	28.3	-	-	-	-	-	-
4CGMML	-	-	25.6	30.6	26.7	30.6	27.4	31.4	28.3	32.4	29.2	33.1	-	-
5CGMML	-	-	29.4	33.4	30.4	34.3	31.1	35.1	32.1	36.1	32.9	36.8	-	-
6CGMML	-	-	-	-	40.8	44.6	41.6	45.4	42.6	46.4	43.3	47.1	44.3	48.1

Motor Mount Installation:

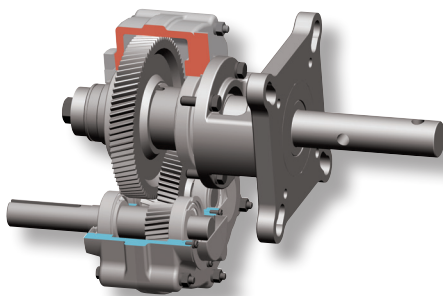


- Step 1:** Remove the necessary number of bolts from the reducer housing required for mounting the motor mount to the reducer housing. Install the front and rear supports (#2 in illustration) using the new reducer bolts (#1 in illustration) supplied. Support flanges should face the output side of the reducer.
- Step 2:** Mount bottom plate (#3 in illustration) on supports with bolts supplied (#7 in illustration). Insert bolts through slotted holes. Add flatwasher, lockwasher and nut. Hand tighten.
- Step 3:** Thread two nuts (#6 in illustration) on each threaded stud (#5 in illustration) leaving approximately 1" of stud protruding at the end. Insert threaded stud with 1" of threads through corner holes of bottom plate.
- Step 4:** Slide top plate (#4 in illustration) over the threaded stud, with the center handling hole positioned opposite the input side of the reducer. Thread nut (#6 in illustration) on the studs and tighten securely.
- Step 5:** Locate the proper position for the motor and bolt it to the top plate. Tighten bolts securely.
- Step 6:** Install Motor sheave and reducer sheave as close to the motor and reducer sheaves by sliding the bottom plate in relation to the supports. Tighten bolts (#7) securely.
- Step 7:** Install V-Belt and tension belts by alternately adjusting nuts (#6) on the threaded jackscrews. Be sure that all bolts are securely tightened, the V-Belt drive properly aligned and a belt guard sized accordingly is installed before operation of reducer.

SCREW CONVEYOR REDUCERS

Dimensions

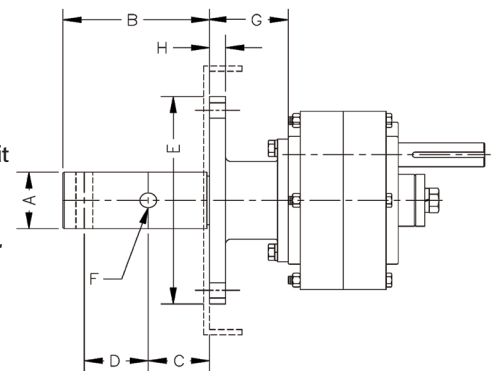
Screw Dia.	A Shaft Dia.	B	C	D	E Square	F	G	H
CGUSM2								
6"-9"	1.50	6.00	2.13	3.00	7.75	17/32	3.56	3/4"
9"-12"	2.00	6.00	2.13	3.00	7.75	21/32	3.56	3/4"
12"-14"	2.44	6.69	2.75	3.00	7.75	21/32	3.56	3/4"
12"-20"	3.00	6.88	2.88	3.00	7.75	25/32	3.56	3/4"
CGUSM3								
9"	1.50	6.00	2.13	3.00	8.63	17/32	3.69	3/4"
9"-12"	2.00	6.00	2.13	3.00	8.63	21/32	3.69	3/4"
12"-14"	2.44	6.69	2.75	3.00	8.63	21/32	3.69	3/4"
12"-20"	3.00	6.88	2.88	3.00	8.63	25/32	3.69	3/4"
CGUSM4								
9"	1.50	6.00	2.13	3.00	9.25	17/32	4.00	7/8"
9"-12"	2.00	6.00	2.13	3.00	9.25	21/32	4.00	7/8"
12"-14"	2.44	6.69	2.75	3.00	9.25	21/32	4.00	7/8"
12"-20"	3.00	6.88	2.88	3.00	9.25	25/32	4.00	7/8"
18"-24"	3.44	9.13	3.88	4.00	9.25	29/32	4.00	7/8"
CGUSM5								
9"-12"	2.00	6.00	2.13	3.00	9.25	21/32	4.25	7/8"
12"-14"	2.44	6.69	2.75	3.00	9.25	21/32	4.25	7/8"
12"-20"	3.00	6.88	2.88	3.00	9.25	25/32	4.25	7/8"
18"-24"	3.44	9.13	3.88	4.00	9.25	29/32	4.25	7/8"
CGUSM6								
12"-14"	2.44	6.69	2.75	3.00	9.25	21/32	5.50	7/8"
12"-20"	3.00	6.88	2.88	3.00	9.25	25/32	5.50	7/8"
18"-24"	3.44	9.13	3.88	4.00	9.25	29/32	5.50	7/8"



Items required for CGUSM Screw Conveyor Drive

1. CGUSM Shaft Mount Reducer
2. SCADK Cleveland Gear Screw Conveyor Adaptor Kit
3. Cleveland Gear Output Drive Shaft

***** Only Cleveland Gear Adaptor kit and Output Drive Shafts can be used with the CGUSM Reducer**



Screw Conveyor Assembly Instructions

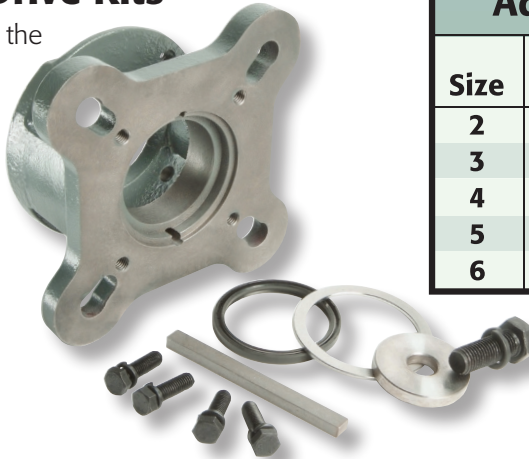
1. On the side opposite the input shaft, remove the snap ring and hub collar from the output hub.
2. Install the CEMA Adaptor Flange to the gearbox using the four bolts and four washers onto the hub that the snap ring and collar were removed.
3. Insert the key from the adaptor kit into the shaft.
4. Insert the shaft through the adaptor flange into the hub with the key fitting into the outer bore of the gearbox.
5. Take the metal keeper plate, the larger bolt, and the larger washer and screw the bolt with washer into the end of the output shaft on the input shaft side of the gearbox.
6. Install the oil seal and metal cover into the groove in the adaptor flange.
7. Make sure all bolts are tightened properly. 8. Install the assembly to the conveyor.

SCREW CONVEYOR REDUCERS

Accessories

Screw Conveyor Adaptor Drive Kits

An SCADK mounting adaptor kit provides all the components needed to prepare a CGUSM reducer for screw conveyor applications. Each kit consists of CEMA mounting adaptor, output shaft keeper plate, oil seal, key and mounting hardware.



Adaptor Kits		
Size	Part Number	Weight (lbs.)
2	2SCADK	20
3	3SCADK	22
4	4SCADK	25
5	5SCADK	35
6	6SCADK	50



Output Drive Shafts

Solid output shafts are tapered to fit CGUSM hollow bore on the adaptor side of the housing. They are available in standard CEMA shaft diameters and configurations.



2 Hole Drive Shafts

Size	Part Number	Screw Diameter	Shaft Diameter	Weight (lbs.)
CGUSM2	2SC0515	6'-9"	1.50"	20
	2SC0520	9"-12"	2.00"	21
	2SC0524	12"-14"	2.44"	22
	2SC0530	12"-20"	3.00"	23
CGUSM3	3SC0515	9"	1.50"	23
	3SC0520	9"-12"	2.00"	24
	3SC0524	12"-14"	2.44"	25
	3SC0530	12"-20"	3.00"	26
CGUSM4	4SC0515	9"	1.50"	30
	4SC0520	9"-12"	2.00"	31
	4SC0524	12"-14"	2.44"	32
	4SC0530	12"-20"	3.00"	33
	4SC0534	18"-24"	3.44"	34
CGUSM5	5SC0520	9"-12"	2.00"	40
	5SC0524	12"-14"	2.44"	41
	5SC0530	12"-20"	3.00"	42
	5SC0534	18"-24"	3.44"	43
CGUSM6	6SC0524	12"-14"	2.44"	50
	6SC0530	12"-20"	3.00"	52
	6SC0534	18"-24"	3.44"	54

3 Hole Drive Shafts

Reducer	Part Number	Screw Diameter	Shaft Diameter	Weight (lbs.)
CGUSM2	2SC0515-3*	6'-9"	1.50"	20
	2SC0520-3*	9"-12"	2.00"	23
	2SC0524-3*	12"-14"	2.44"	26
	2SC0530-3*	12"-20"	3.00"	30
CGUSM3	3SC0515-3*	9"	1.50"	22
	3SC0520-3*	9"-12"	2.00"	25
	3SC0524-3*	12"-14"	2.44"	28
	3SC0530-3*	12"-20"	3.00"	32
CGUSM4	4SC0515-3*	9"	1.50"	30
	4SC0520-3*	9"-12"	2.00"	32
	4SC0524-3*	12"-14"	2.44"	34
	4SC0530-3	12"-20"	3.00"	36
	4SC0534-3	18"-24"	3.44"	38
CGUSM5	5SC0520-3*	9"-12"	2.00"	42
	5SC0524-3*	12"-14"	2.44"	44
	5SC0530-3	12"-20"	3.00"	46
	5SC0534-3	18"-24"	3.44"	50
CGUSM6	6SC0524-3*	12"-14"	2.44"	55
	6SC0530-3	12"-20"	3.00"	58
	6SC0534-3	18"-24"	3.44"	60

*Made to order from semi-finished shaft

SHAFT MOUNT AND SCREW CONVEYOR REDUCERS

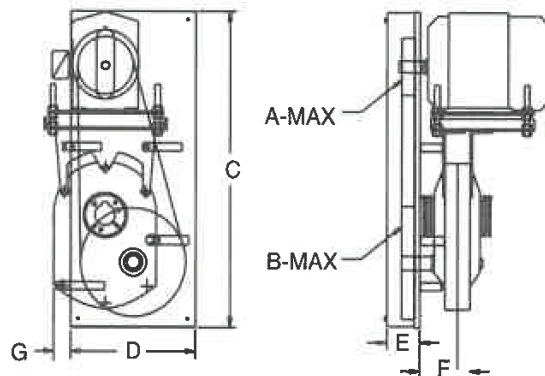
Accessories

Belt Guards

The CGC belt guard's hinged design provides for easy access to belts and sheaves.

The slotted metal construction assembles to the reducer and motor mounting holes.

They are sized to fit most common sheave diameters.

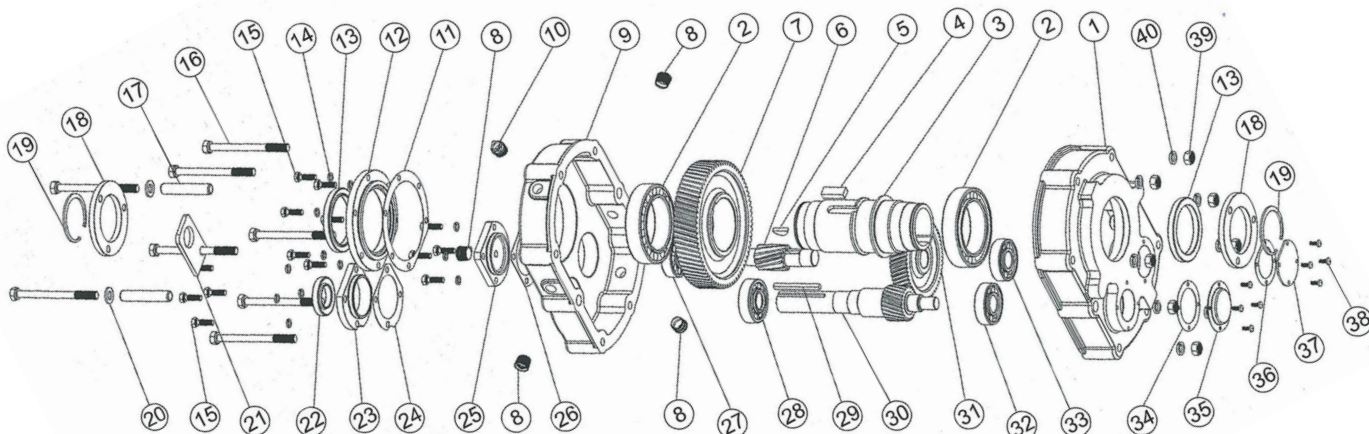


CGMM Belt Guard

Part Number	NEMA Motor Frame	Center Distance Min	Center Distance Max	A	B	C	D	E	F	G	Weight (lbs.)
2CGBG	56T-215T	18.70	23.90	6.00	12.00	34.00	15.00	4.00	3.50	-	35
3CGBG	56T-215T	20.20	25.30	7.00	14.00	37.00	17.00	4.00	3.94	-	38
4CGBG	143T-286T	21.20	28.70	7.00	15.00	43.00	18.00	4.50	5.19	-	45
5CGBG	143T-286T	22.70	30.20	7.00	15.00	45.00	18.00	4.25	5.13	0.625	60
6CGBG	143T-326T	25.90	34.20	8.00	18.00	50.00	20.00	6.00	6.06	1.63	75
7CGBG	143T-365T	30.60	40.00	10.00	20.00	56.00	23.00	6.00	6.88	0.500	85
8CGBG	213T-365T	35.40	44.20	12.00	25.00	63.00	27.00	6.50	7.46	0.156	100
9CGBG	254T-445T	38.00	46.70	12.00	25.00	66.00	30.00	9.00	7.63	2.91	120
10CGBG	320T-445T	42.50	50.80	12.00	25.00	72.50	30.00	9.00	8.25	4.31	130

Parts List & Exploded View

Number	Part Name	Number	Part Name	Number	Part Name	Number	Part Name
1	Right hand gear case	11	Output hub bearing cover gasket	21	Lifting eye	31	1st reduction gear
2	Output hub bearing	12	Output hub bearing cover	22	Input shaft oil seal	32	Input shaft bearing (output side)
3	Output hub	13	Output hub oil seal	23	Input shaft bearing cover	33	Intermediate pinion bearing (output side)
4	2nd reduction gear key	14	Cover lock washer	24	Bearing cover gasket	34	Backstop cover gasket
5	1st reduction gear key	15	Cover bolt	25	Intermediate bearing cover	35	Backstop cover
6	Intermediate Pinion	16	Case bolt	26	Bearing cover gasket	36	Intermediate cover gasket
7	2nd reduction gear	17	Hollow dowel	27	Intermediate pinion bearing (input side)	37	Intermediate pinion cover
8	Oil pipe plug	18	Output hub collar	28	Input shaft bearing (input side)	38	Cross recessed screw
9	Left hand gear case	19	Output hub snap ring	29	Input shaft square key	39	Case nut
10	Breather plug	20	Case plain washer	30	Input shaft & pinion	40	Case lock washer

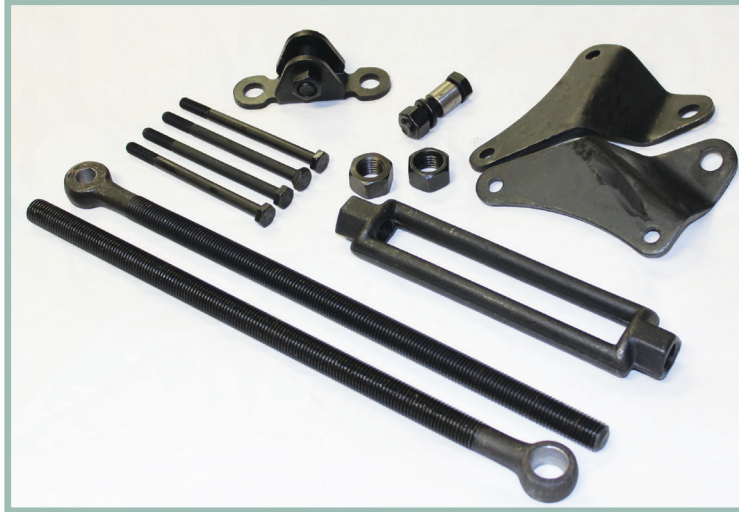


SHAFT MOUNT AND SCREW CONVEYOR REDUCERS

Service Repair Kits

Torque Arm Kits

While each reducer comes with its own torque arm kit at no extra charge, Cleveland Gear offers torque arm kits as spare parts. The torque arm kits are composed of interlocking heavy gauge steel parts for proper tensioning and tightening.



Size	Part Number	Weight
2	2CGTA	10
3	3CGTA	10
4	4CGTA	15
5	5CGTA	15
6	6CGTA	20
7	7CGTA	30
8	8CGTA	40
9	9CGTA	50
10	10CGTA	60

Repair Kits

Cleveland Gear offers two levels of repair kits for gear cases 4–10. KIT1 consists of the input & output seals, gaskets & shims complete set of bearings. KIT2 consists of everything in KIT1 plus the complete set of gearing. KIT2 is offered in all three ratios 9:1 (sizes 4–6), 15:1, and 25:1.

Kit 1

Size	Part Number	Weight
4	CGSM4-KIT1	25
5	CGSM5-KIT1	25
6	CGSM6-KIT1	25
7	CGSM7-KIT1	30
8	CGSM8-KIT1	35
9	CGSM9-KIT1	50
10	CGSM10-KIT1	70

Kit 2

Size	Part Number	Weight
4	CGSM4-09KIT2	50
	CGSM4-15KIT2	50
	CGSM4-25KIT2	50
5	CGSM5-09KIT2	60
	CGSM5-15KIT2	60
	CGSM5-25KIT2	60
6	CGSM6-09KIT2	110
	CGSM6-15KIT2	110
	CGSM6-25KIT2	110
7	CGSM7-15KIT2	125
	CGSM7-25KIT2	125
8	CGSM8-15KIT2	175
	CGSM8-25KIT2	175
9	CGSM9-15KIT2	200
	CGSM9-25KIT2	200
10	CGSM10-15KIT2	250
	CGSM10-25KIT2	250



SHAFT MOUNT AND SCREW CONVEYOR REDUCERS

Technical Data

Actual Ratios, Maximum Input Speeds and Driven Speeds

Size	Nominal Ratio 9:1			Nominal Ratio 15:1			Nominal Ratio 25:1		
	Actual Ratio	Maximum Input RPM	Maximum Output RPM	Actual Ratio	Maximum Input RPM	Maximum Output RPM	Actual Ratio	Maximum Input RPM	Maximum Output RPM
CGUSM2	9.26	1851	200	14.04	1974	140	23.37	1994	85
CGUSM3	8.9	1780	200	14.87	2083	140	24.75	2100	85
CGUSM4	9.68	936	200	15.13	2118	140	24.38	2072	85
CGUSM5	8.94	1788	200	15.4	1925	125	25.56	2044	80
CGUSM6	9.13	1826	200	15.34	1916	125	25.14	2010	80
CGSM7	-	-	-	15.23	1827	120	24.84	1863	75
CGSM8	-	-	-	15.08	1809	120	24.62	1847	75
CGSM9	-	-	-	15.12	1814	120	25.66	1925	75
CGSM10	-	-	-	15.42	1819	120	24.44	1823	75

Reducer – Output Shaft Overhung Load Ratings

Size	Nominal Ratio	Shaft Size	Overhung Load (lbs) at Various RPM										
			10	20	30	50	80	100	120	140	160	180	200
CGUSM2	9, 15, 25	1 7/16	2000	1510	1270	1010	840	820	720	720	710	710	700
		1 15/16	1750	1320	1110	890	730	710	630	630	620	620	610
CGUSM3	9, 15, 25	1 15/16	5400	4250	3680	3050	2620	2440	2310	2210	2110	2040	1980
		2 3/16	5240	4120	3570	2960	2540	2370	2240	2140	2050	1980	1920
CGUSM4	9, 15, 25	2 3/16	6520	5180	4510	3800	3230	3000	2830	2710	2600	2510	2430
		2 7/16	6360	5060	4410	2710	3160	2930	2770	2640	2530	2450	2370
CGUSM5	9, 15, 25	2 7/16	7460	5860	5080	4280	3690	3450	3270	3110	2980	2880	2790
		2 15/16	7060	5540	4800	4040	3490	3260	3090	2940	2820	2720	2640
CGUSM6	9, 15, 25	2 15/16	9100	7100	6100	5000	4100	4050	3700	3550	3400	3300	3200
		3 7/16	8200	6400	5500	4500	3700	3650	3400	3300	3250	3200	3150
CGSM7	15, 25	3 7/16	11400	9500	7300	5950	4750	5050	4500	4300	4250	4200	4150

NEMA Motor Information (1750 RPM)

Horsepower (HP)	NEMA Motor Frame	Shaft Diameter	Minimum Sheave Diameter
1	143T	7/8	2.2
1 1/2	145T	7/8	2.4
2	145T	7/8	2.4
3	182T	1 1/8	2.4
5	184T	1 1/8	3.0
7 1/2	213T	1 3/8	3.0
10	215T	1 3/8	3.8
15	254T	1 5/8	4.4
20	256T	1 5/8	4.4
25	284T	1 7/8	4.4
30	286T	1 7/8	5.2
40	324T	2 1/8	6.0
50	326T	2 1/8	6.8
60	364T	2 3/8	7.4
75	365T	2 3/8	8.6
100	405T	2 7/8	8.6
125	444T	3 3/8	10.5
150	445T	3 3/8	10.5
200	447T	3 3/8	13.2

Minimum Sheave Diameters

Size	Shaft Diameter	Nominal Ratio		
		9:1	15:1	25:1
CGUSM2	1 1/8	5.0	3.0	3.0
CGUSM3	1 1/4	5.0	4.0	4.0
CGUSM4	1 7/16	6.5	4.6	4.6
CGUSM5	1 15/16	7.0	5.4	5.4
CGUSM6	2 3/16	7.0	6.2	6.2
CGSM7	2 7/16	-	6.2	6.2
CGSM8	2 7/16	-	6.2	6.2
CGSM9	2 7/16	-	8.0	8.0
CGSM10	2 11/16	-	8.5	8.5

SHAFT MOUNT REDUCERS

Mechanical Ratings

Reducer Part Number	Class I			Class II			Class III		
	Input Hp	Output RPM	Output Torque	Input Hp	Output RPM	Output Torque	Input Hp	Output RPM	Output Torque
CGUSM2-09	7.5	85-105	5035-4076	5	85-105	3357-2717	3	85-100	2014-1712
	10	105-150	5435-3804	7.5	110-150	3891-2853	5	105-150	2717-1902
	15	160-200	5350-4280	10	150-200	3804-2853	7.5	160-200	2675-2140
CGUSM2-15	2	18-32	6700-3769	1.5	19-34	4761-2660	1.5	27-51	3350-1774
	3	27-51	6700-3547	2	25-47	4824-2566	2	37-71	3260-1699
	5	71-85	4247-3547	3	39-75	4639-2412	3	58-113	3119-1601
	7.5	75-140	6030-3230	5	70-136	4307-2217	5	104-140	2899-2154
	10	104-140	5798-4307	7.5	111-140	4074-3230	-	-	-
CGUSM2-25	0.5	4-6	7538-5025	0.33	4-6	5025-3350	0.25	4-6	3769-2513
	0.75	6-10	7538-4523	0.5	6-9	5025-3350	0.33	5-9	4020-2233
	1	8-15	7538-4020	0.75	9-16	5025-2827	0.50	8-15	3769-2010
	1.5	13-23	6958-3933	1	12-22	5025-2741	0.75	13-23	3479-1966
	2	18-32	6700-3769	1.5	19-34	4761-2660	1	18-32	3350-1884
	3	27-51	6700-3547	2	25-47	4824-2566	1.5	27-51	3350-1774
	5	47-70	6415-4307	3	39-75	4639-2412	2	37-71	3260-1699
7.5	75-85	6030-5321	5	70-85	4307-3547	3	58-85	3119-2128	
CGUSM3-09	10	85-105	6714-5435	7.5	85-105	5035-4076	5	85-105	3357-2717
	15	110-140	7782-6114	10	100-140	5707-4076	7.5	100-140	3891-3057
	20	150-200	7609-5707	15	150-200	5707-4280	10	150-200	3804-2853
CGUSM3-15	5	27.46	11167-6555	2	15-24	8040-5025	2	22-36	5482-3350
	7.5	41-74	11031-6112	3	23-38	7865-4761	3	33-57	5482-3174
	10	57-103	10579-5855	5	38-69	7934-4370	5	57-103	5290-2927
	15	94-140	9623-6461	7.5	60-110	7538-4111	7.5	94-140	4811-3230
	-	-	-	10	85-140	7094-4307	-	-	-
CGUSM3-25	0.75	4-5	11307-9045	0.5	4-5	7538-6030	0.5	6-7	5025-4307
	1	6-7	10050-8615	0.75	6-8	7538-5653	0.75	8-12	5653-3769
	1.5	8-12	11307-7538	1	8-11	7538-5482	1	11-17	5482-3547
	2	11-17	10964-7094	1.5	12-18	7538-5025	1.5	16-26	5653-3479
	3	16-26	11307-6958	2	15-24	8040-5025	2	22-36	5482-3350
	5	27-46	11167-6555	3	23-38	7865-4761	3	33-57	5482-3174
	7.5	41-74	11031-6112	5	38-69	7934-4370	5	57-85	5290-3547
	10	57-85	10579-7094	7.5	60-85	7538-5321	-	-	-
CGUSM4-09	20	85-105	12427-10870	15	85-115	10071-7443	10	85-115	6714-4962
	25	100-135	14267-10568	20	110-150	10376-7609	15	120-150	7133-5707
	30	120-160	14267-10700	25	140-190	10190-7509	20	160-200	7144-5707
	40	160-200	14267-11413	30	170-200	10700-8560	-	-	-
CGUSM4-15	5	18-26	16750-11596	3	15-22	12060-8223	3	21-32	8615-5653
	7.5	27-40	16750-11307	5	25-37	12060-8149	5	37-56	8149-5384
	10	37-56	16298-10768	7.5	39-59	11596-7665	7.5	57-93	7934-4863
	15	57-93	15869-9726	10	53-84	11378-7179	10	79-141	7633-4277
	20	79-140	15266-8615	15	83-140	10898-6461	-	-	-
	25	102-140	14780-10768	-	-	-	-	-	-
CGUSM4-25	1	4-5	15075-12060	0.75	4-5	11307-9045	0.5	4-5	7538-6030
	1.5	5-7	18091-12922	1	5-7	12060-8515	0.75	5-7	9045-6461
	2	7-10	17229-12060	1.5	7-11	12922-8223	1	7-10	8615-6030
	3	11-15	16446-12060	2	10-14	12060-8615	1.5	11-15	8223-6030
	5	18-26	16750-11596	3	15-22	12060-8223	2	14-21	8615-5743
	7.5	27-40	16750-11307	5	25-37	12060-8149	3	21-32	8615-5653
	10	37-56	16298-10768	7.5	39-59	11596-7665	5	37-56	8149-5384
	15	57-85	15869-10641	10	53-84	11378-7179	7.5	57-85	7934-5321
	20	79-85	15266-14189	-	-	-	-	-	-

SHAFT MOUNT REDUCERS

Mechanical Ratings (cont)

Reducer Part Number	Class I			Class II			Class III		
	Input Hp	Output RPM	Output Torque	Input Hp	Output RPM	Output Torque	Input Hp	Output RPM	Output Torque
CGUSM5-09	25	78-95	18291-15018	20	78-105	14632-10870	10	78-80	7316-7133
	30	85-115	20141-14887	25	100-135	14267-10568	15	85-105	10071-8152
	40	110-150	20752-15218	30	120-160	14267-10700	20	110-135	10376-8454
	50	140-180	20381-15852	40	160-200	14267-11413	25	140-160	10190-8917
	60	170-200	20141-17120	-	-	-	30	170-200	20071-14267
CGUSM5-15	10	21-36	28715-16750	7.5	22-38	20557-11902	5	21-36	14358-8375
	15	33-56	27410-16152	10	30-52	20101-11596	7.5	33-56	13705-8076
	20	46-78	26218-15462	15	48-82	18844-11031	10	46-78	13109-7731
	25	60-101	25126-14926	20	69-117	17479-10308	15	76-125	11902-7236
	30	76-125	23803-14472	25	95-125	15869-12060	20	115-125	10487-9648
	40	115-125	20975-19297	-	-	-	-	-	-
CGUSM5-25	1.5	4	22614	1.5	5-6	18091-15075	0.75	4	11307
	2	4-6	30151-20101	2	6-9	20101-13400	1	4-6	15075-10050
	3	6-10	30151-18091	3	9-14	20101-12922	1.5	6-10	15075-9045
	5	10-17	30151-17736	5	15-24	20101-12563	2	8-13	15075-9277
	7.5	16-26	28266-17395	7.5	22-38	20557-11902	3	13-20	13916-9045
	10	21-36	28715-16750	10	30-52	20101-11596	5	21-36	14358-8375
	15	33-56	27410-16152	15	48-82	18844-11031	7.5	33-56	13705-8076
	20	46-78	26218-15462	20	69-80	17479-15075	10	46-78	13109-7731
25	60-80	25126-18844	-	-	-	-	-	-	
CGUSM6-09	50	78-105	36581-27175	30	78-90	21949-19022	25	78-95	18291-15018
	60	95-125	36042-27392	40	90-120	25363-19022	30	95-120	18021-14267
	75	120-200	35667-21400	50	110-150	25939-19022	40	125-150	18261-15218
	-	-	-	60	130-180	26338-19022	50	160-200	17833-14267
	-	-	-	75	160-200	26750-21400	60	190-200	18021-17120
CGUSM6-15	15	20-32	45226-28266	10	19-29	31738-20794	7.5	19-26	2/25/22
	20	27-45	44668-26801	15	28-47	32304-19245	10	29-41	22334-13400
	25	34-59	44339-25552	20	39-68	30924-17736	15	39-57	21536-12060
	30	42-75	43073-24121	25	50-94	30151-16038	20	50-74	20794-10579
	40	58-114	41587-21158	30	61-125	29657-14472	25	61-98	20101-12060
	50	75-125	40201-24121	40	89-120	27102-20101	30	85-89	18276-14472
CGUSM6-25	3	4-5	45226-36181	2	4-5	30151-24121	1.5	4-5	22613-18091
	5	7-9	43073-33501	3	6-8	30151-22613	2	5-7	24121-17229
	7.5	10-15	45226-30151	5	9-14	33501-21536	3	8-12	22613-15075
	10	13-20	46386-30151	7.5	14-21	32304-21536	5	13-20	23193-15075
	15	20-32	45226-28266	10	19-29	31738-29794	7.5	20-32	22613-14133
	20	27-45	44668-26801	15	28-47	32304-19245	10	27-45	22334-13400
	25	34-59	44339-25552	20	38-68	30924-17736	15	42-75	21536-12060
	30	42-75	43073-24121	25	50-80	30151-18844	20	58-70	20794-17229
	40	58-81	41587-29779	30	61-76	29657-23803	-	-	-
CGSM7-15	20	19-26	63480-46392	20	27-38	44664-31740	10	19-26	31740-23196
	25	24-33	62820-45684	25	34-49	44340-30768	15	29-41	31188-22056
	30	29-41	62388-44124	30	42-60	43068-30156	20	39-57	30924-21156
	40	39-57	61848-42312	40	57-88	42312-27408	25	50-74	30156-20376
	50	50-74	60300-40740	-	-	-	30	61-98	29652-18456
	-	-	-	-	-	-	40	85-89	28380-27108
CGSM7-25	5	5-6	60300-50256	3	4-5	45228-36180	3	6-7	30156-25848
	7.5	7-9	64608-50256	5	7-8	43068-37692	5	9-12	33504-25128
	10	9-12	67008-50256	7.5	10-13	45228-34788	7.5	14-19	32304-23808
	15	14-19	64608-47604	10	13-18	46392-33504	10	19-26	31740-23196
	20	19-26	63480-46392	15	20-27	45228-33504	15	29-41	31188-22056
	25	24-33	62820-45684	20	27-38	44664-31740	20	39-57	30924-21156
	30	29-41	62388-44124	25	34-49	44340-30768	25	50-74	30156-20376
	40	39-57	61848-42312	30	42-60	43068-30156	30	61-70	29652-25848
50	50-74	60300-40740	40	57-75	42312-32160	-	-	-	

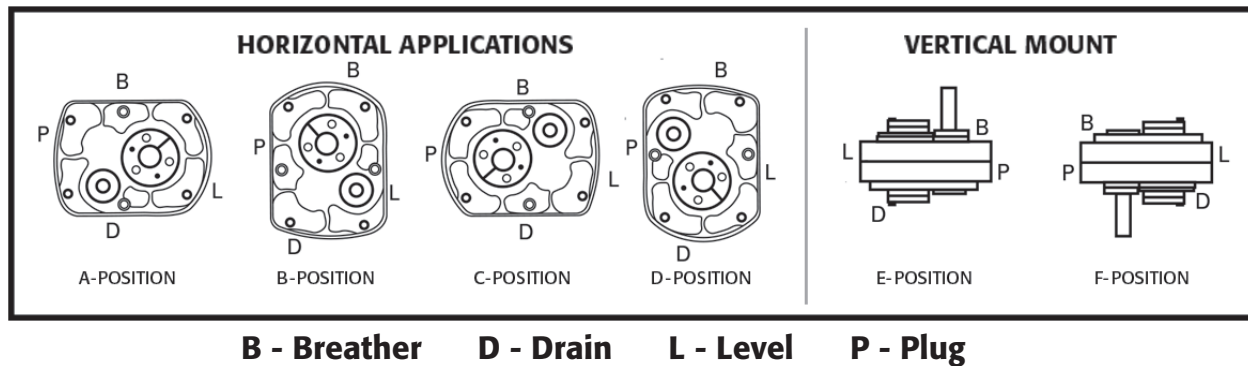
SHAFT MOUNT REDUCERS

Mechanical Ratings (cont)

Reducer Part Number	Class I			Class II			Class III		
	Input Hp	Output RPM	Output Torque	Input Hp	Output RPM	Output Torque	Input Hp	Output RPM	Output Torque
CGSM8-15	30	20-28	90456-64608	25	23-33	65544-45684	15	20-28	45228-32304
	40	26-38	92772-63480	30	28-41	64608-44124	20	26-38	46392-31740
	50	33-49	91368-61536	40	37-56	65196-43068	25	33-49	45684-30768
	60	40-60	90456-60300	50	47-72	64152-41880	30	40-60	45228-30156
	75	51-70	88680-64608	60	57-89	63480-40656	40	54-84	44664-28716
	-	-	-	75	74-75	61116-60300	50	70-110	43068-27408
	-	-	-	-	-	-	60	86-115	42072-31464
CGSM8-25	7.5	4-6	113064-75384	5	4-6	75384-50256	3	4-5	45228-36180
	10	6-8	100500-75384	7.5	6-9	75384-50256	5	6-8	50256-37692
	15	9-13	100500-69576	10	8-12	75384-50256	7.5	9-13	50256-34788
	20	13-18	92772-67008	15	13-19	69576-47604	10	13-18	46392-33504
	25	16-23	94224-65544	20	18-26	67008-46392	15	20-28	45228-32304
	30	20-28	90456-64608	25	23-33	65544-45684	20	26-38	46392-31740
	40	26-38	92772-63480	30	28-41	64608-44124	25	33-49	45684-30768
	50	33-49	91368-61536	40	37-56	65196-43068	30	40-60	45228-30156
	60	40-60	90456-60300	50	47-72	64152-41880	40	54-70	44664-34464
	75	51-70	88680-64608	60	57-75	63480-48240	50	70-75	43068-40200
-	-	-	75	74-75	61116-60300	-	-	-	
CGSM9-15	40	19-25	126948-96480	30	20-27	90456-67008	20	19-25	63480-48240
	50	23-32	131088-94224	40	26-36	92772-67008	25	23-32	65544-47112
	60	28-39	129216-92772	50	33-46	91368-65544	30	28-39	64608-46392
	75	35-50	129216-90456	60	40-56	90456-64608	40	38-53	63480-45516
	-	-	-	75	50-73	90456-61956	50	47-69	64152-43692
	-	-	-	-	-	-	60	57-85	63480-42564
CGSM9-25	10	5	120600	7.5	5	90456	5	5	60300
	15	7-8	129216-113064	10	6-7	100500-86148	7.5	7-8	64608-56532
	20	9-12	134004-100500	15	10-12	90456-75384	10	9-12	67008-50256
	25	11-15	137052-100500	20	13-17	92772-70944	15	14-19	64608-47604
	30	14-19	129216-95220	25	16-22	94224-68520	20	19-25	63480-48240
	40	19-25	126948-96480	30	20-27	90456-67008	25	23-32	65544-47112
	50	23-32	131088-94224	40	26-36	92772-67008	30	28-39	64608-46392
	60	28-39	129216-92772	50	33-46	91368-65544	40	38-53	63480-45516
	75	35-50	129216-90456	60	40-56	90456-64608	50	47-69	64152-43692
	-	-	-	75	50-73	90456-61956	60	57-75	63480-48240
CGSM10-15	60	19-27	189075-133053	50	22-32	136077-93553	30	19-27	94538-66526
	75	24-34	187105-132074	60	27-39	133053-92113	40	26-37	92113-64728
	100	32-46	187105-130160	75	34-49	132074-91643	50	32-46	93553-65080
	125	41-59	182542-126851	100	46-67	130160-89364	60	39-56	92113-64150
	150	50-70	179621-128301	125	76-85	98477-88050	75	50-72	89811-62368
	-	-	-	-	-	-	100	59-120	10148-49895
CGSM10-25	15	5-6	179621-149684	10	5	119748	7.5	5-6	89811-74842
	20	7-8	171068-149684	15	7-9	128301-99790	10	7-8	85534-74842
	25	8-10	187105-149684	20	9-12	133053-99790	15	10-13	89811-69085
	30	10-13	179621-138170	25	11-15	136077-99790	20	13-18	92113-65526
	40	13-18	184227-133053	30	13-19	138170-94538	25	16-22	93553-68038
	50	16-22	187105-136077	40	18-25	133053-95798	30	19-27	94538-66526
	60	19-27	189075-133053	50	22-32	136077-93553	40	26-37	92113-64728
	75	24-34	187105-132074	60	27-39	133053-92113	50	32-46	93553-65080
	100	32-46	187105-130160	75	34-49	132074-91643	60	39-56	92113-64150
	125	41-59	182542-126851	100	46-67	130160-89364	75	50-72	89811-62368
	150	50-70	179621-128301	125	59-75	126851-99790	-	-	-

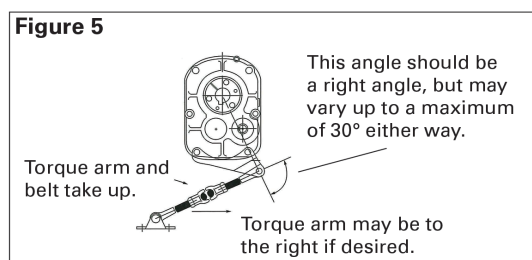
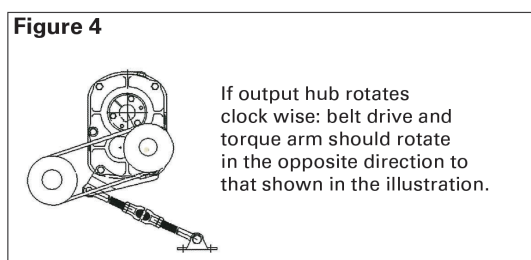
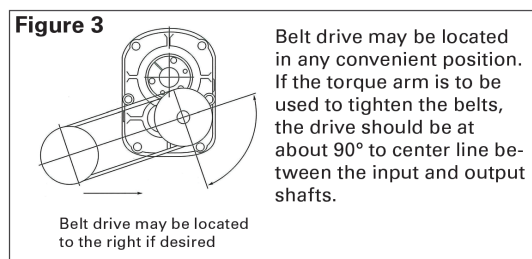
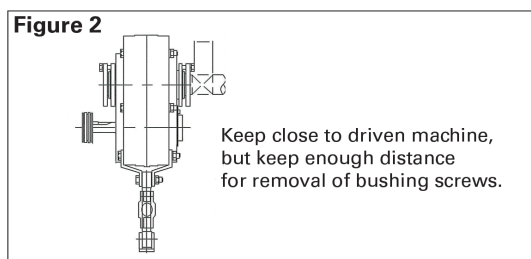
INSTALLATION AND LUBRICATION

1. Use lifting eyebolts or lifting lugs to lift reducer.
2. Determine the running position from the figures below. Note that the reducer is supplied with four plugs around the sides. These plugs must be arranged relative to the running positions as follows: the bottom plug is the drain plug, please replace this plug with the magnetic plug. **REMOVE THE RUBBER STRAP FROM THE BREATHER PLUG**, and install it on the top-most hole. Of the two remaining plugs, the lowest one is the minimum oil level plug. The running position is not limited to the positions shown, but if running over 20° either way in position B & D, or 5° in positions A & C, the oil level plug cannot be used safely to check the oil level. It can be used safely to check the oil level if, during checking, the torque arm is disconnected and the reducer is swung to within 20° for positions B & D, or 5° for positions A & C. Because of the different possible positions of the reducer, it may be necessary to make special adaptations using the lubrication filling holes furnished along with other standard pipe fittings, stand pipes, and/or oil level gauges as required.



Note: Below 15 RPM output speed, oil level must be adjusted to reach highest oil level plug "P"

3. Mount reducer on driven shaft as follows. To ensure that drive is not unexpectedly started, turn off and lock out power source before proceeding. Failure to observe these precautions could result in bodily injury.
 - (A) Install pulley on gearbox input shaft as close to the reducer as possible, and mount reducer on driven shaft, as close to bearing as practical (Keep minimum distance for removing bushing screws, see Fig 2). Failure to do this will cause excess loads in bearings and could cause premature failure.
 - (B) Install motor and wedge belt drive with the belt pull at approximately 90 degrees to the centerline between driven and input shafts (see Fig 3). This will permit tensioning of the wedge belt drive with the torque arm, which should preferably be in tension. If output hub runs counter clockwise, torque arm should be positioned to the right (see Fig 4).
 - (C) Install torque arm fulcrum on a rigid support so that the torque arm will be at an approximate right angle to the centerline through the driven shaft and torque arm case bolts (see Fig 5). Make sure there is sufficient take up in the turnbuckle for belt tension adjustment.



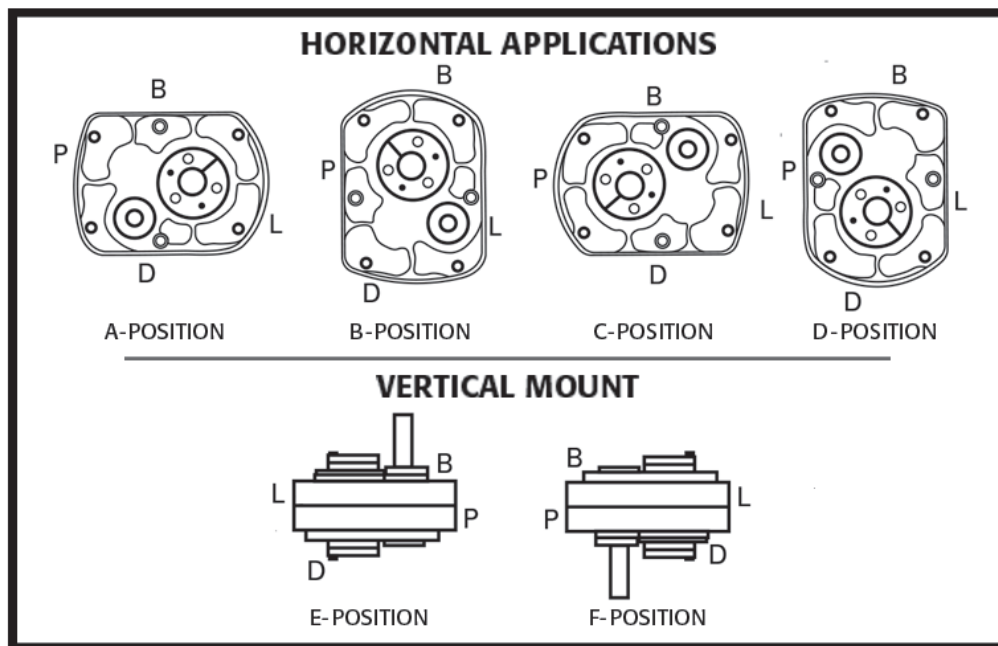
INSTALLATION AND LUBRICATION (cont)

Recommended Oil Information

Temperature	15°F to 60°F	60°F to 125°F	60°F to 125°F
Mobil Type	SHC 630	SHC 630	SHC 632
AGMA Rating	5	5	6
ISO Grade	220	220	320
CGUSM2	1-400 RPM	N/A	1-400 RPM
CGUSM3	1-150 RPM	151-400 RPM	1-150 RPM
CGUSM4	1-100 RPM	101-400 RPM	1-100 RPM
CGUSM5	1-40 RPM	41-400 RPM	1-40 RPM
CGUSM6	1-40 RPM	41-400 RPM	1-40 RPM
CGSM7	1-40 RPM	41-400 RPM	1-40 RPM
CGSM8	1-40 RPM	41-400 RPM	1-40 RPM
CGSM9	1-40 RPM	41-400 RPM	1-40 RPM
CGSM10	1-40 RPM	41-400 RPM	1-40 RPM

Approximate Oil Capacity (quarts)

Mounting Position	CGUSM2	CGUSM3	CGUSM4	CGUSM5	CGUSM6	CGSM7	CGSM8	CGSM9	CGSM10
A	.875	1.5	2.875	3.25	4.25	6.5	8.5	13	23
B	1	1.5	2.25	4	5	8	11	13	14
C	.625	.75	1.25	3.25	4.25	7.25	10.5	12.5	15.75
D	1	2.25	1.75	4	6	9.25	8.5	14.25	18.75
E	1.625	2.625	3.375	7	8.625	15.375	19.125	25.375	41
F	1.75	3	4.25	8.625	9.125	16.375	16.375	25.375	41



Note: Below 15 RPM output speed, oil level must be adjusted to reach highest oil level plug "P"
 Note: If mounting position is "B" or "D" and backstop is used, Consult Factory for proper oil level.

CLEVELAND GEAR'S LIBRARY OF INFORMATION

"MUSTS" FOR YOUR ENGINEERING DEPARTMENT

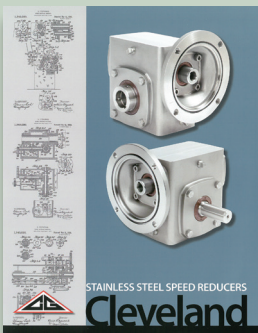


Catalog #901- Cleveland Gear Capabilities Overview Brochure

Information on CGC history, open gearing, enclosed drives, current design and production capabilities. Also includes gear-box rebuild and refurbishment services.

Catalog #410- "M" Series Modular Speed Reducers

Ratings and dimensional data for the 1.33" to 5.25" center distance drives, both single and double reduction worm gear drives. Accessory kit information is provided. Part numbering and configuration data is also included.

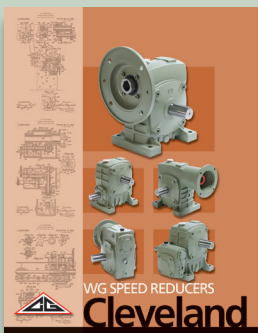
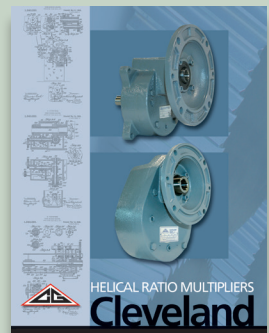


Catalog #425- Stainless Steel Speed Reducers

Information on Cleveland's Stainless Steel worm gear reducers for food, beverage and tough environmental applications. Three center distances available for quick delivery.

Catalog #412- Inline Helical Ratio Multipliers

Create Double Reduction Helical Worm gear units from stock components. Available in three case sizes, NEMA flange sizes 56C to 210TC. Offered & stocked in 5 ratios.

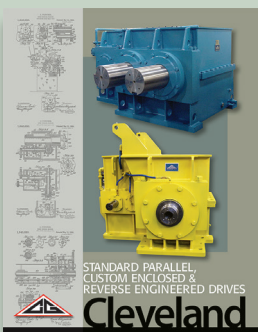
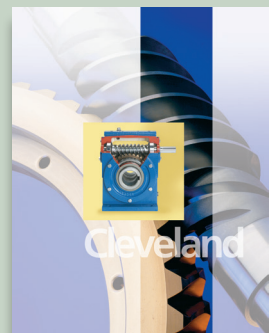


Catalog #810- "WG" Series Speed Reducers

Ratings, selection and dimensional information for 40mm to 200mm center distance drives in rugged cast iron housings. Includes single reduction and double reduction models.

Catalog #700- Millennium Gear Drives

Catalog provides data on ratings, dimensions, and design configurations for 5"-12" C.D. drives. Universal mounting with motor adapters & helical attachments.



Catalog #750- Standard Parallel & Custom Drives

Standard Parallel Shaft, Reverse Engineered and Custom Enclosed Gear Drives Brochure. Provides information on our capabilities and depicts units & the applications Cleveland has manufactured.

Catalog #600- Cleveland Open Worm Gearing

Provides dimensional and rating data for a broad range of ratios in center distances from 3" through 36". Dimensions for both bolt on and composite type gears are shown.



CLEVELAND GEAR CO.

3249 EAST 80th STREET
CLEVELAND, OHIO 44104
PHONE 216-641-9000



TOLL-FREE 800-423-3169 FAX 216-641-2731

