



WEBSTER

SINCE 1876

AMUSEMENT PARK CHAINS

YOUR LINK TO
TOTAL VALUE



websterchain.com • 800-243-9327

ISO9001 Registered

HISTORY

Since 1876 Webster Industries, Inc has provided conveying solutions of all types to a broad range of markets with a variety of products and expertise. Towner K. Webster founded Webster Industries with his "Common Sense" elevator bucket in Chicago, Illinois. In 1907 Webster relocated to Tiffin, Ohio where our corporate headquarters reside today. Over the past century Webster has evolved from producing elevator buckets to being the world's leading manufacturer of engineered class chains, commercial castings and vibrating conveyors.

LOCATIONS

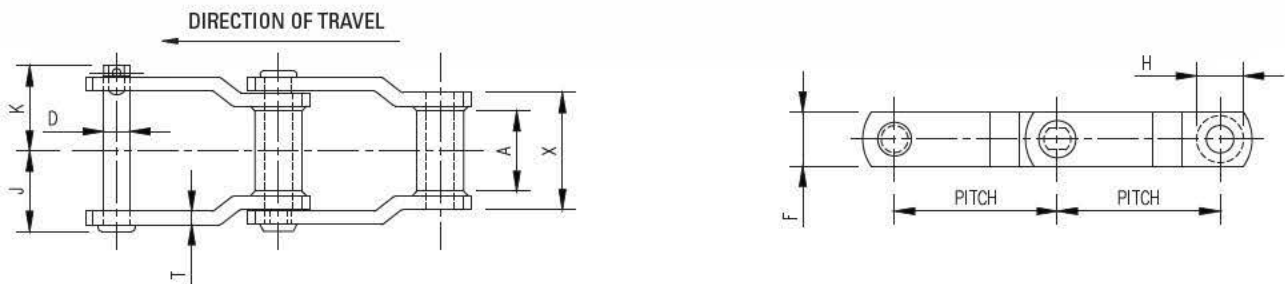
Our Tiffin headquarters has over 300,000 square feet of manufacturing space and includes a malleable iron foundry, punch press operations, heat treat facility, machine shop, sheet metal fabrication department, chain assembly area, in-plant laboratory and testing facilities. Our two warehousing and assembly locations located in Meridian, Mississippi and Tualatin, Oregon allow for quick access to over \$7 million dollars of inventory throughout North America. Our three manufacturing facilities stock over 250,000 feet of chain to serve our customer requirements.

VERTICAL INTEGRATION

Vertical Integration Manufacturing system—While most other companies rely increasingly on outsourcing to produce its products, Webster Industries continues to invest heavily in our vertical integration. To Webster, vertical integration guarantees superior product design, consistent product quality, and the best deliveries in the industry. All aspects of your chain are made under one roof in Tiffin, Ohio. Webster's reputation for high quality products comes from the same principles it was founded on American materials, American labor and American pride.



Welded Steel Mill Chains



CHAIN DIMENSIONS

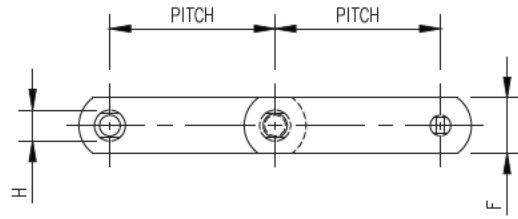
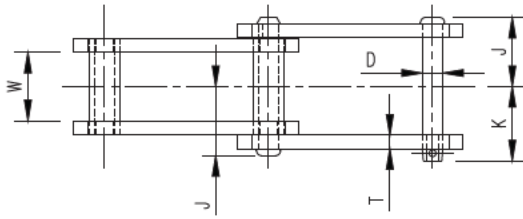
Chain No.	Average Pitch Inches	Approx links in 10 Feet	Average Weight Per Ft. Lbs.	Average Ultimate Strength in Lbs.	Rated Working Load in Lbs. ★	Sidebars			Length of Bearing X	Overall Width			Pins		Barrels		Max. Spkt. Width A
						Thk. T	Height F	Material		☐ to Cotter End K	☐ to Head or Rivet End J	Dia. D	Material	Outside Dia. H	Material		
WH82-AP	3.075	39	5.3	36,000	4,400	¼	1 ¼	M.C.H.T	2 ¼	1 29/32	1 19/32	9/16	ALY. H.T	1 7/8	M.C.H.T	1 ¼	
WH124-AP	4.000	30	8.5	69,000	7,200	3/8	1 ½	M.C.H.T	2 ¾	2 29/32	2 1/2	3/4	ALY. H.T	1 3/8	M.C.H.T	1 ½	
WH124H-AP	4.063	30	14.5	100,000	9,200	½	2	M.C.H.T	3	2 9/16	2 5/16	7/8	ALY. H.T	1 5/8	M.C.H.T	1 ½	
WH126-AP	4.080	30	14.5	102,000	10,200	½	2	M.C.H.T	3	2 19/32	2 9/32	1	ALY. H.T	1 ¾	M.C.H.T	1 ½	
WH132-AP	6.050	20	14.2	115,000	15,300	½	2	M.C.H.T	4 3/8	3 7/32	3 1/8	1	ALY. H.T	1 ¾	M.C.H.T	2 ¾	
WH155-AP	6.050	20	19	145,000	17,750	9/16	2 ½	M.C.H.T	4 ½	3 ½	3 3/8	1 1/8	ALY. H.T	1 ¾	M.C.H.T	2 ¾	

★ See page A-12 for Service Factor, Table 9, and page A-13 for Speed Factor, Tables 10 and 11 in Webster master #400 catalog.



AMUSEMENT PARK CHAINS

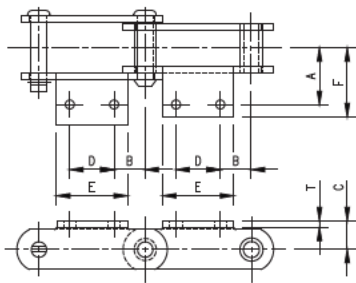
Hardened Steel Bushed Chains (HSB)



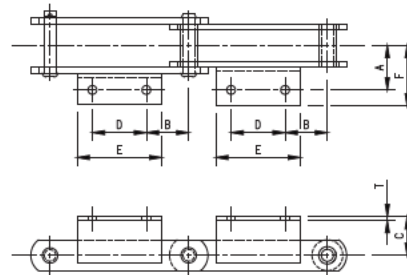
CHAIN DIMENSIONS

Chain No.	Average Pitch Inches	Approx links in 10 Feet	Average Weight Per Ft. Lbs.	Average Ultimate Strength in Lbs.	Rated Working Load in Lbs. ☆	Sidebars			Inside Sidebars	Overall Width		Pins		Bushings	
						Thk.	Height	Material		℄ to Cotter End	℄ to Head or Rivet End	Dia.		Outside Dia.	
						T	F		W	K	J	D	Material	H	Material
HSB102-1/2-AP	4.040	30	9.4	50,000	7,700	3/8	1 3/4	M.C.H.T	2 3/16	2 3/8	2 1/8	3/4	ALY. H.T	1 3/8	ALY C.H
HSB4933-AP	4.040	30	11	72,000	9,200	3/8	2	M.C.H.T	2 1/4	2 15/32	2 5/32	7/8	ALY. H.T	1 3/8	ALY C.H
HSB111-AP	4.760	25	10.2	50,000	8,850	3/8	2	M.C.H.T	2 5/8	2 19/32	2 11/32	3/4	ALY. H.T	1 7/16	ALY C.H
HSB150+-AP	6.050	20	16.6	100,000	15,100	1/2	2 1/2	M.C.H.T	3 3/8	3 7/32	3 1/32	1	ALY. H.T	1 3/4	ALY C.H
HSB233-AP	4.000	30	4.8	16,000	2,650	3/16	1 1/2	M.C.H.T	2 1/32	1 1/4	1 3/32	3/4	ALY. H.T	1 1/16	ALY C.H
HSB247B-AP	6.000	20	12.1	55,000	8,350	3/8	2 1/2	M.C.H.T	1 17/32	1 1 1/16	2 15/32	1	ALY. H.T	1 1/2	ALY C.H
HSB247B-AP	6.000	20	14.2	116,000	9,200	3/8*	2 1/2	M.C.H.T	1 17/32	1 1 1/16	2 19/32	1	ALY. H.T	1 1/2	ALY C.H

* ISSB = 1/2; OSSB = 3/8"



STYLE 1



STYLE 2

ATTACHMENT

Chain No.	Attachment					
	Height	Width	Projection	HOLE LOCATION		HOLE DIAMETER
	C	E	F Max	A	D	
HSB233-AP	1 1/4	2 5/8	2 13/16	1 3/4	1 1/4	7/16
HSB247B-AP	2	2 3/4	4 1/16	2 7/8	1 1/2	17/32
HSB247B-AP	2 1/4	3 1/2	4 11/16	3 3/8	1 3/4	25/32

☆ See page A-12 for Service Factor, Table 9, and page A-13 for Speed Factor, Tables 10 and 11 in Webster master #400 catalog.

AMUSEMENT PARK CHAINS

Webster Industries utilizes its years of manufacturing experience and chain engineer experts to manufacture the best product for the amusement park industry. Safety is of the utmost importance and paramount when it involves any type of people moving equipment. We hold ourselves to the highest of quality standards and are certified to ISO9001. Throughout the manufacturing process Webster Industries personnel conduct testing, confirm metallurgy, certify materials, certify the heat treatment of the material, and other very important



quality checks. These checks are done to ensure that we produce the highest quality product as well as the safest product in the market.

Webster Industries designs, engineers and manufactures top quality amusement park chains to handle the toughest environments; water rides, mega coasters, roller coasters, kids' coasters and other types of amusement park rides. All

rides differ slightly in design, but we take into consideration the high speeds, dynamic loading conditions, and the environment in which the chain runs in order to build the right chain for the right application.



We offer Original Equipment Manufacturer "drop in" replacement chains; metric or inch, straight sidebar or offset sidebar. Webster industries offers replacements on these hard to get, long lead time and costly OEM replacement chains. Webster Industries will analyze an OEM chain and discuss with the customer the modes of failures that the customer has seen during the life of the chain. Based on the information provided by the customer, our knowledge and experience, we will offer a superior replacement chain that addresses the mechanisms of failure seen in the field. By evaluating the past, it allows us to provide a chain that will increase the fatigue strength of the chain as well as increase the life of the product. All of this saves you, the customer, time and money!

AP CHAINS

- Welded steel lift chains
- Hardened steel bushed lift chains
- Steel bushed roller lift chains
- Hardened steel bushed water ride chains
- European (Metric) lift chains

SERVICES OFFERED

- Onsite inspections
- Onsite trouble shooting
- RMA programs with written analysis and recommendations

Webster chains as well as OEM and competitive chains

Elongation measurements

- Reverse engineered OEM drop in replacement chains
- Maintenance training instruction

WEBSTER'S MANUFACTURING EXCELLENCE

- Vertically integrated
- US sourced steel
- Special heat treat
- Special steels (zinc plating, hot dip galvanizing, lube pins, lube holes, special lubricants per OEM standards, etc)
- Shot peening of sidebars
- Perfect hole process
- Burnished hole process
- Material certification
- Dimensional Inspection Reports
- Heat Treatment certifications
- Certificate of Compliance



1-800-243-9327

www.websterchain.com