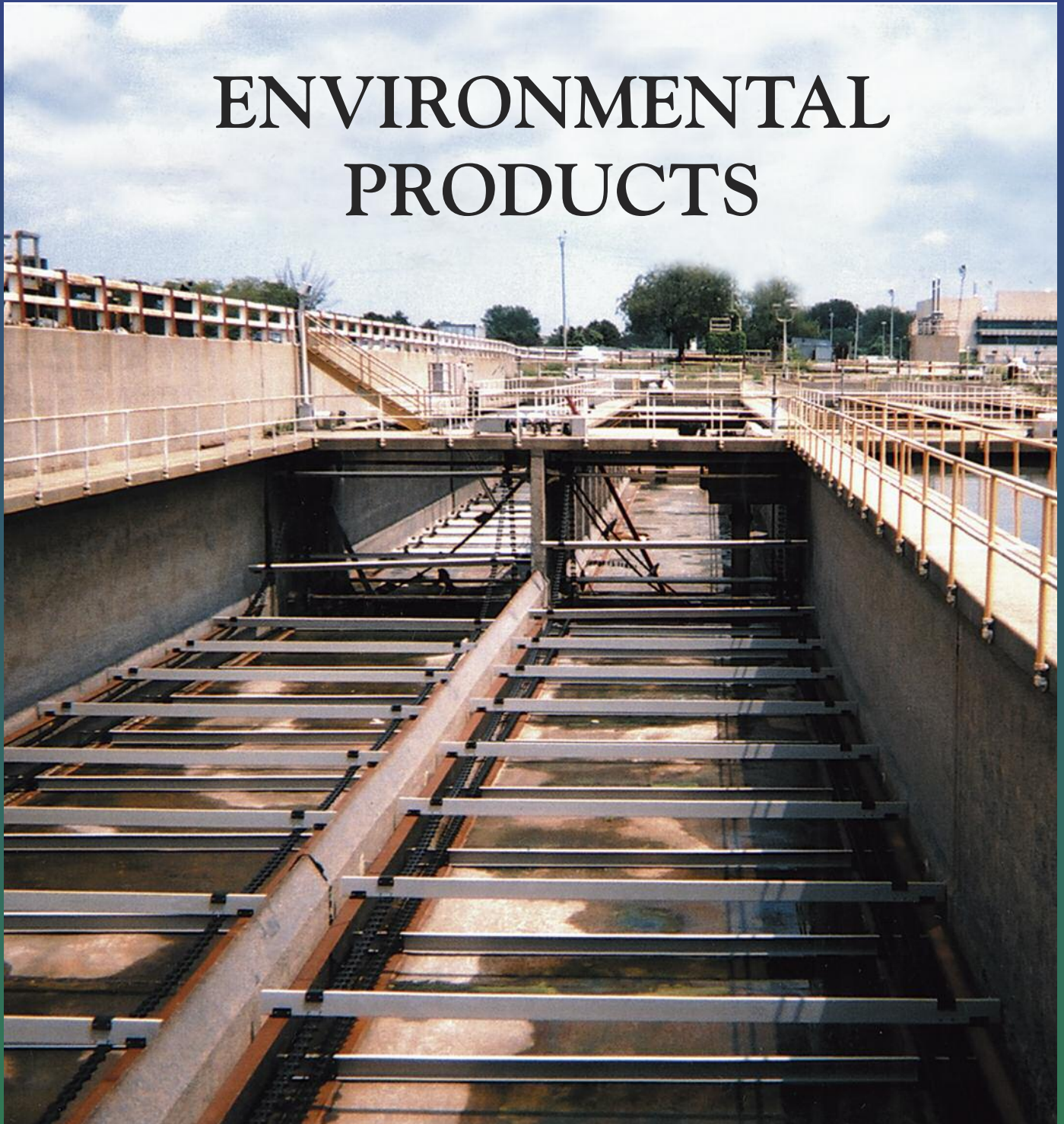


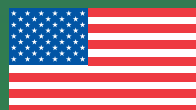


ALLIED-LOCKE INDUSTRIES

ENVIRONMENTAL PRODUCTS



Member



Made in USA

ISO 9001
Registered Quality System

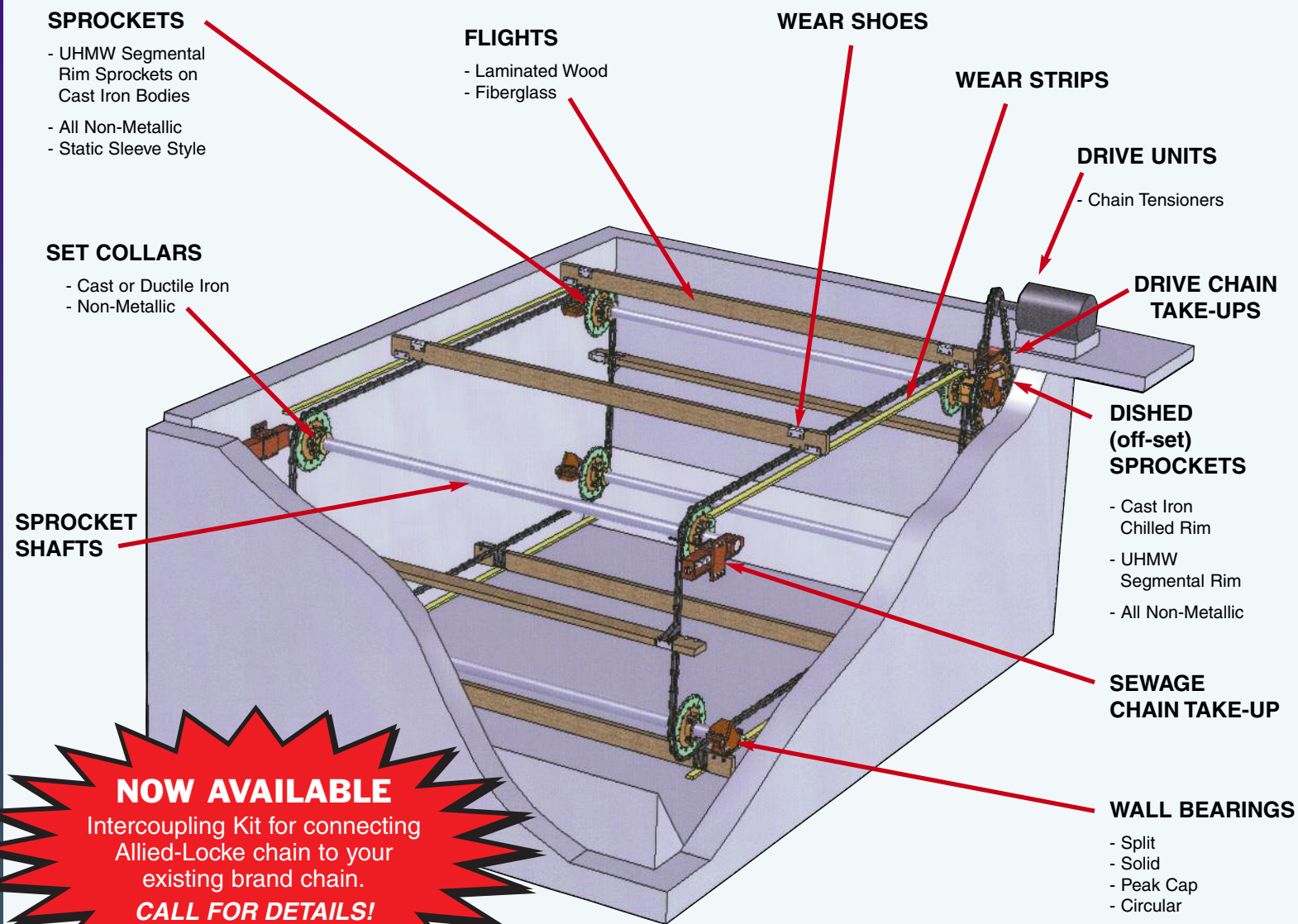
FLIGHTS



Additional Products Available:

- Grating
- Return Rail
- Filler Blocks
- Weirs
- Baffles
- Scum Skimmers
- Anchor Plates
- Wall Brackets
- Pillow Block Bearings
- Stainless Steel Hardware

The illustration below shows how some of the Allied-Locke components are used in power transmission configurations in water and waste water treatment processes. We can supply components for a new or refurbished facility. All of our products are standard, but the flexibility of our manufacturing methods allows custom design for your particular treatment facility. Call us for specifications on items not shown. All our products and materials are American made.



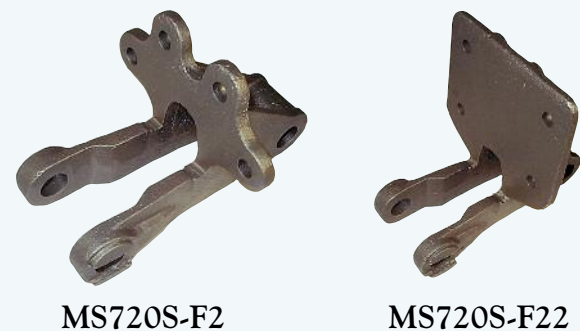
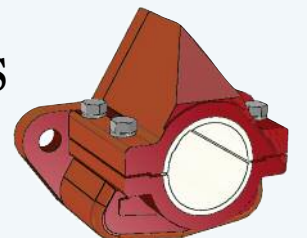
NOW AVAILABLE
Intercoupling Kit for connecting Allied-Locke chain to your existing brand chain.
CALL FOR DETAILS!

WEAR SHOES

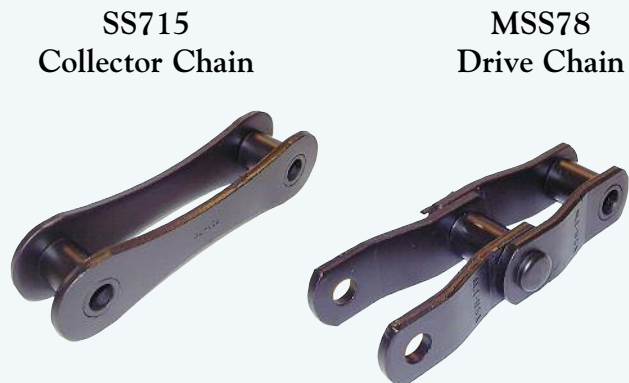


WALL BEARINGS

UHMW OR BABBITT LINED



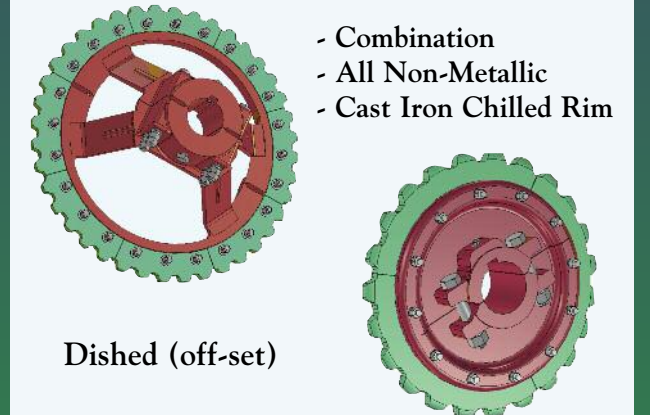
MALLEABLE IRON COLLECTOR CHAIN



STAINLESS STEEL

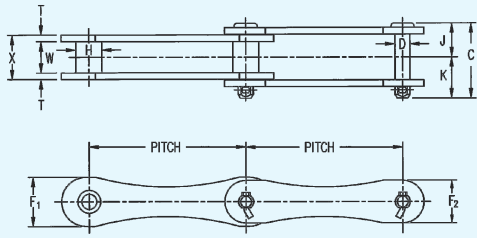


NON-METALLIC

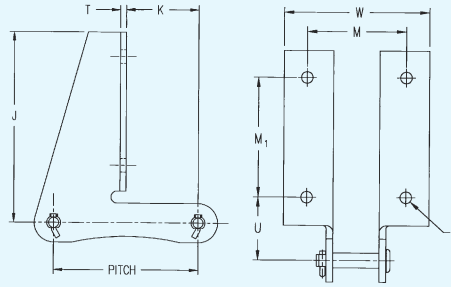


DISHED (off-set) SPROCKETS

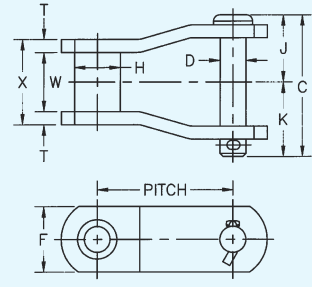
STAINLESS STEEL CHAINS



SS-715



SS715-F22

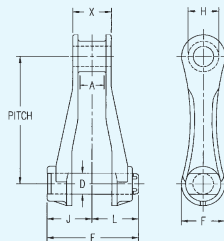


MSS78

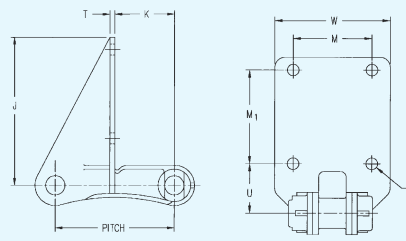
Moline Catalog No.	Pitch in Inches	Links Per 10 Feet	Weight Per Foot in Lbs.	Average Ultimate Strength in Lbs.	Over-All Width – Detachable Cottered C	Pin Dia. D	Height of Side Bar			Dia. of Bushing H	Head of Pin to Center Line J	End of Pin to Center Line – Detachable Cottered K	Thickness of Side Bar T	Distance Between Side Bars W	Over-All Length of Bushing X
							F	F1	F2						
SS715	6.00	20	3.9	29,000	2.82	.562	—	1.88	1.62	1.00	1.32	1.50	.25	1.19	1.69
MSS78	2.609	46	4.2	21,000	2.70	.500	1.25	—	—	.88	1.28	1.42	.25	1.13	1.62

Moline Attachment No.	Pitch in Inches	D		J	K	M	M1	T	U	W	Weight Each Lbs.
		Bolt Diameter	Hole Diameter								
SS715-F226	6.000	0.38	0.44	6.21	3.00	3.75	2.62	0.25	2.38	5.50	4.5
SS715-F228	6.000	0.38	0.44	7.88	3.00	3.75	4.50	0.25	2.38	5.50	5.4

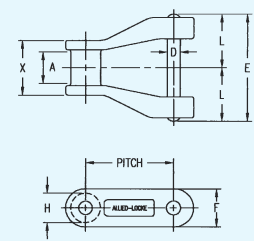
NON-METALLIC CHAINS



NCS720S



NCS720S-F22



NH78

Moline Catalog No.	Pitch in Inches	Links Per 10 Feet	Weight Per Foot in Lbs.	Average Ultimate Strength in Lbs.	Maximum Allowable Sprocket Face A	Over-All Width Detachable Cottered C	Pin Dia. D	Over-All Width Fixed Riveted E	Height of Side Bar F	Dia. of Barrel H	Head of Pin to Center Line J	End of Pin to Center Line Detachable Cottered K	End of Pin to Center Line Fixed Riveted L	Bearing Length X
NH78	2.609	46	1.5	3,100	.94	—	.38	3.19	1.12	.88	—	—	1.59	1.62

Moline Attachment No.	Pitch in Inches	D		J	K	M	M1	T	U	W
		Bolt Diameter	Hole Diameter							
NCS720S-F226	6.000	0.50	0.56	6.14	3.00	3.75	2.62	0.25	2.38	5.50
NCS720S-F228	6.000	0.50	0.56	7.50	3.00	3.75	4.50	0.25	2.38	5.50



ALLIED-LOCKE INDUSTRIES

TOLL FREE PHONE: (800) 435-7752 • TOLL FREE FAX: (800) 462-3130

Green River Industrial Park • Dixon, Illinois • www.alliedlocke.com